

# 2018 NATIONAL TRAINEE SURVEY RESULTS

GENERAL (INTERNAL) MEDICINE  
SPECIALTY SPECIFIC QUESTIONS  
(QUALITY CRITERIA)

SEPTEMBER 2018

Warren Lynch  
Quality Management Officer  
Joint Royal Colleges of Physicians Training Board

## Introduction

The General (Internal) Medicine (GIM) and Acute (Internal) Medicine (AIM) Quality Criteria has been developed with the purpose of supporting the educational experience of doctors undertaking the demanding role of either GIM or AIM Registrar. The difficulties faced by Registrars involved in the unselected acute medical take were already well documented, however it was felt that specific and measurable quality criteria would help set a practical vision outlining how doctors might be better assisted and educationally supported to perform this role, which could also be monitored UK-wide via the General Medical Council's National Training Surveys.

The criteria have been grouped into the following three domains:

- 1 – Ensuring safe and effective care
- 2 – Creating a supportive environment
- 3 – Improving Educational Experience

Questions relating to each of the domains have been developed and these were included in the 2018 GMC Trainee Survey as Programme Specific Questions. The details of these questions and the trainee responses can be found within this report.

2772 trainees completed the survey. All trainees training in the specialties below were requested to complete the survey, however **those NOT dual training in G(I)M only completed question 1**. The numbers of trainees in each specialty completing the survey were as follows:

Specialty	Specialty 1	Dual CCT with GIM	% on dual CCT
Acute (Internal) Medicine	330	293	89
Allergy	8	0	0
Cardiology	584	238	41
Clinical Pharmacology and Therapeutics	28	24	86
Endocrinology and Diabetes Mellitus	346	343	99
Gastroenterology	482	435	90
Geriatric Medicine	618	597	97
Infectious Diseases	89	54	61
Renal Medicine	238	175	74
Respiratory Medicine	512	475	93
Rheumatology	224	138	62
<b>Total</b>	<b>3459</b>	<b>2772</b>	<b>80</b>

## Executive Summary

Trainees dual training in General (Internal) Medicine surveyed reported a wide variety in terms of the percentage of trainees who agreed the Quality Criteria was being met. The average range (% difference in agreement between highest and lowest specialties) across all of the domains was 20.58.

Across each of the three domains, the range was as follows:

- 1 – Ensuring safe and effective care: 17.33
- 2 – Creating a supportive environment: 19.11
- 3 – Improving Educational Experience: 28.75

High levels (more than 75%) of overall agreement that the Quality Criteria was being met were seen in four areas:

- Consultants on call are easily accessible for advice both 'in' and 'out of hours' (**87% in overall agreement**) with A(I)M, CPT and Endocrinology and Diabetes Mellitus recording >89%.
- Management of the acute take and out of hours care is effectively supported by multidisciplinary team working (e.g. by critical care outreach or Hospital at Night staff (**80% overall agreement**) with CPT, A(I)M, Endocrinology and Diabetes and Respiratory Medicine, Rheumatology (>82%)
- Consultants on call generally provide appropriate on site supervision. (77% in overall agreement) with CPT, Endocrinology and Diabetes and Respiratory Medicine (>79%)
- Educational supervisor's knowledge of the GIM curriculum and decision aid as very good or good. (77% in overall agreement) with CPT, Endocrinology and Diabetes, A(I)M, Rheumatology and Geriatric Medicine (>80%)

Low levels (less than 45%) of trainees in overall agreement that the Quality Criteria was being met were observed in seven areas. They were:

- Allocated and are able to spend, at least half a day per week of protected/bleep-free time to pursue learning opportunities specific to your GIM training (**15% in overall agreement**)
- Trainee representatives involved in (at least monthly) meetings to review service and/or rota difficulties? (**19% in overall agreement**)
- Consultants and trainee representatives involved in the design of GIM rotas (**22% in overall agreement**)
- Only appropriate calls and referrals are directed to the GIM Registrar (**31% in overall agreement**)
- Shifts are organised to ensure sufficient time is available for consultant supervised patient reviews and workplace based assessments at handover (**35% overall agreement**)
- A named lead takes responsibility for final decisions on covering rota gaps (**38% in overall agreement**)
- Training and assessment is provided for all essential procedures in the GIM curriculum (for example, in a simulated environment (**38% in overall agreement**)

## Specialty Specific Questions (Quality Criteria)

Quality Criteria	% trainees agreeing overall	2017/2018 Difference	Agreement Highest		Agreement Lowest		% difference [Range]
1.1: (Q2) Shifts are organised to allow consultants, GIM Registrars and other key staff to be present for the duration of handover.	69%	N/A	Endo & Diabetes	74%	Geriatrics	64%	<b>10</b> [64-74]
			A(I)M	73%	Cardiology	66%	
			Respiratory	72%	Infectious Diseases	67%	
			CPT	71%	Renal, Gastro	68%	
			Rheumatology	69%			
1.1 (Q3) Shifts are organised to ensure sufficient time is available for consultant supervised patient reviews and workplace based assessments at handover.	35%		Endo & Diabetes	46%	Infectious Diseases	24%	<b>22</b> [24-46]
			A(I)M	45%	CPT	29%	
			Rheumatology	38%	Respiratory	30%	
			Cardiology	37%	Gastroenterology	34%	
			Geriatric, Renal	35%			
1.2: (Q4) Do you usually have contact with the consultant(s) on duty? (tick all that apply)		N/A					
• End of shift	47%		CPT	58%	Infectious Disease	35%	23
• Start of shift	74%		A(I)M	84%	CPT	67%	17
• Before going off site	26%		Endo & Diabetes, ID	35%	Renal	20%	15
• No contact	10%		ID, Renal	15%	A(I)M	5%	10
1.3: (Q5) In general, consultants on call are easily accessible for advice both 'in' and 'out of hours'	87%	N/A	CPT	96%	Infectious Diseases	74%	<b>22</b> [74-96]
			A(I)M, Endo & Diabetes	90%	Renal Medicine	79%	
			Geriatrics	89%	Gastroenterology	87%	
			Cardio, Resp, Rheum	88%			
1.3 (Q6) Consultants on call generally provide appropriate on site supervision.	77%	N/A	CPT, Endo & Diabetes	83%	Renal	69%	<b>14</b> [69-83]
			Respiratory	80%	Infectious Diseases	74%	
			Rheumatology	78%	Cardiology	75%	
			A(I)M, Gastro, Geriatrics	76%			

Quality Criteria	% trainees agreeing overall	2017/2018 Difference	Agreement Highest		Agreement Lowest		% difference [Range]
1.5: (Q7) Effective arrangements are in place to ensure that skilled staff are always available to perform emergency procedures (e.g. insertion of chest drains and central venous cannulation).	55%	N/A	A(I)M	65%	Infectious Diseases	43%	<b>22</b> [43-65]
			Endo & Diabetes	63%	Renal Medicine	46%	
			Cardiology, Resp	59%	Geriatrics	48%	
			CPT	58%	Rheumatology	55%	
			Gastroenterology	57%			
1.6: (Q8) Management of the acute take and out of hours care is effectively supported by multidisciplinary team working (e.g. by critical care outreach or Hospital at Night staff).	80%	N/A	CPT	88%	Infectious Diseases	74%	<b>14</b> [74-88]
			A(I)M , Endo, Resp	84%	Geriatrics, Cardio	75%	
			Rheumatology	83%	Renal Medicine	77%	
			Gastroenterology	79%			
2.1: (Q9) My contribution as a GIM Registrar is valued by the Trust/Board.	53%	N/A	A(I)M	65%	Infectious Diseases	39%	<b>26</b> [39-65]
			Endo & Diabetes	63%	CPT	46%	
			Rheumatology	59%	Gastro, Renal	47%	
			Respiratory	54%	Cardio, Geriatrics	53%	
2.2: (Q10) I am regularly required to undertake basic administrative and clinical tasks that could be performed by other suitably qualified staff.	54%	N/A	Geriatrics	61%	Endo & Diabetes	48%	<b>13</b> [48-61]
			Respiratory	59%	Rheumatology	49%	
			A(I)M	56%	Renal Medicine	52%	
			Cardiology	55%	CPT, Gastro, ID	54%	
2.2 (Q11) In general, only appropriate calls and referrals are directed to the GIM Registrar.	31%	N/A	Endo & Diabetes	36%	Cardio, CPT	25%	<b>11</b> [25-36]
			Geriatrics	34%	Gastro, Renal	29%	
			A(I)M, Resp, Rheum	33%	Infectious Diseases	32%	
2.2 (Q12) In general, I feel I am treated with respect by colleagues in other services.	70%	N/A	Endo & Diabetes	79%	Renal Medicine	62%	<b>17</b> [62-79]
			Rheumatology	76%	Infectious Diseases	65%	
			Respiratory	72%	Cardio, CPT	67%	
			A(I)M	71%	Gastroenterology	68%	
			Geriatrics	70%			

Quality Criteria	% trainees agreeing overall	2017/2018 Difference	Agreement Highest		Agreement Lowest		% difference [Range]
2.4: (Q13) Are both consultants and trainee representatives involved in the design of GIM rotas?	22%	N/A	CPT	33%	Gastroenterology	17%	<b>16</b> [17-33]
			A(I)M	25%	Infectious Diseases	19%	
			Renal, Rheum	23%	Cardio, Respiratory	20%	
			Endo, Geriatrics	22%			
2.5: (Q14) Does a named lead take responsibility for final decisions on covering rota gaps?	38%	N/A	CPT	50%	Infectious Diseases	26%	<b>24</b> [36-50]
			A(I)M , Endo	44%	Gastroenterology	34%	
			Rheumatology	40%	Cardio, Geriatrics	35%	
			Renal, Respiratory	36%			
2.6 (Q15) Are trainee representatives involved in (at least monthly) meetings to review service and/or rota difficulties?	19%	N/A	CPT	29%	Rheumatology	13%	<b>16</b> [13-29]
			Infectious Diseases	28%	Gastroenterology	14%	
			A(I)M	23%	Cardiology	15%	
			Geriatrics	19%	Endo & Diabetes	16%	
			Respiratory	18%	Renal	17%	
2.7 (Q16) The IT systems available in my Trust/Board support the effective and safe management of the acute take.	51%	N/A	Endo & Diabetes	62%	Infectious Diseases	35%	<b>27</b> [35-62]
			A(I)M	56%	Geriatrics	49%	
			Gastro, Rheum	53%	CPT, Respiratory	50%	
			Cardio, Renal	51%			
2.8 (Q17) Do you have easy access to workstations that are private and secure?	62%	N/A	Endo & Diabetes	72%	Infectious Diseases	50%	<b>22</b> [50-72]
			Gastro, Rheum	68%	CPT	54%	
			Renal	65%	A(I)M, Geriatrics	59%	
			Respiratory	63%	Cardiology	61%	
2.9 (Q18) Which of the following are usually available to you at all times of the day? (tick all that apply)		N/A					
• Hot/cold food/drink	38%		Rheumatology	45%	Infectious Diseases	26%	19
• Kitchen facilities	58%		A(I)M	67%	Rheumatology	53%	14
• Parking	49%		Cardiology	58%	Infectious Diseases	24%	34
• Rest areas	45%		Rheumatology	54%	CPT	29%	25
• None of the above	15%		CPT	29%	Respiratory	8%	21

Quality Criteria	% trainees agreeing overall	2017/2018 Difference	Agreement Highest		Agreement Lowest		% difference [Range]
3.1 (Q19) Do you have opportunities to lead the post-take ward round with the duty Consultant present?	58%	N/A	CPT	67%	Renal	51%	<b>16</b> [51-67]
			A(I)M	65%	Geriatrics	53%	
			Endo & Diabetes	63%	Infectious Diseases	54%	
			Rheumatology	61%	Gastroenterology	55%	
			Cardio, Respiratory	58%			
3.2 (Q20) Training and assessment is provided for all essential procedures in the GIM curriculum (for example, in a simulated environment).	38%	N/A	A(I)M	56%	Infectious Diseases	30%	<b>26</b> [30-56]
			Endo & Diabetes	43%	Gastro, Renal, Resp	33%	
			CPT	42%	Cardiology	35%	
			Rheumatology	40%			
			Geriatrics	39%			
3.3 (Q21) Are you allocated, and are able to spend, at least half a day per week of protected/bleep-free time to pursue learning opportunities specific to your GIM training?	15%	N/A	A(I)M	41%	ID, Renal, Resp	7%	<b>34</b> [7-41]
			CPT	21%	Gastroenterology	12%	
			Endo & Diabetes, Geri	16%			
			Rheumatology	15%			
			Cardiology	13%			
3.4 (Q22) Please rate your named educational supervisor's knowledge of the GIM curriculum and decision aid. • Very good/Good	77%	N/A	CPT	96%	Infectious Diseases	57%	<b>39</b> [57-96]
			Endo & Diabetes	86%	Renal	58%	
			A(I)M	85%	Cardiology	71%	
			Rheumatology	83%	Gastroenterology	77%	
			Geriatrics	81%	Respiratory	78%	
Good practice states that you should meet with your GIM educational supervisor at specified points throughout the year. Which meetings have already taken place/ expected to take place in the future? • First 2 mths of training year • Midway through year • 3 mths before ARCP • No meetings	81% 52% 46% 11%	N/A	Respiratory	91%	Cardiology	63%	28
			Rheumatology	61%	Cardiology	41%	20
			CPT	54%	Cardiology	33%	21
			Renal	22%	A(I)M	5%	17

The numbers directly below each question are the percentage of trainees in the specialty agreeing the quality criteria in relation to that question has been met. Specialties are listed alphabetically by quartile in the table below with 'quartile four' containing the highest ranked and 'quartile one' the lowest. The data was produced by taking an average of all quality criteria percentages. Information on questions 1, 4 and 18 are shown on pages 9-18 of this report.

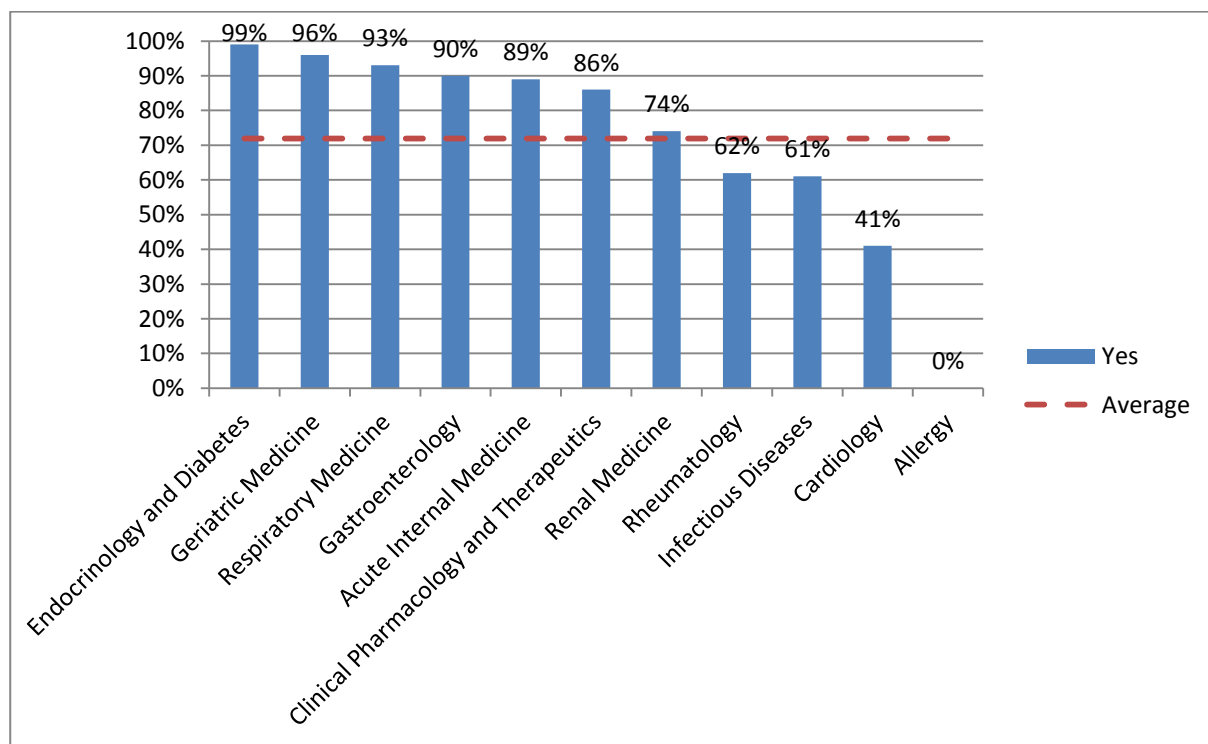
Quartile	Specialty	Year	N=	Q2	Q3	Q5	Q6	Q7	Q8	Q9	Q10	Q11	Q12	Q13	Q14	Q15	Q16	Q17	Q19	Q20	Q21	Q22
4	Acute Internal Medicine	2018	293	73	45	90	76	65	84	65	56	33	71	25	44	23	56	59	65	56	41	85
4	Clinical Pharmacology and Therapeutics	2018	24	71	29	96	83	58	88	46	54	25	67	33	50	29	50	54	67	42	21	96
4	Endocrinology and Diabetes	2018	343	74	46	90	83	63	84	63	48	36	79	22	44	16	62	72	63	43	16	86
3	Respiratory Medicine	2018	475	72	30	88	80	59	84	54	59	33	72	20	36	18	50	63	58	33	7	78
3	Rheumatology	2018	138	69	38	88	78	55	83	59	49	33	76	23	40	13	53	68	61	40	15	83
2	Cardiology	2018	238	66	37	88	75	59	75	53	55	25	67	20	35	15	51	61	58	35	13	71
2	Geriatric Medicine	2018	597	64	35	89	76	48	75	53	61	34	70	22	35	19	49	59	53	39	16	81
1	Gastroenterology	2018	435	68	34	87	76	57	79	47	54	29	68	17	34	14	53	68	55	33	12	77
1	Infectious Diseases	2018	54	67	24	74	74	43	74	39	54	32	65	19	26	28	35	50	54	30	7	57
1	Renal Medicine	2018	175	68	35	79	69	46	77	47	52	29	62	23	36	17	51	65	51	33	7	58

0 – 50% of trainees in agreement	51 – 75% of trainees in agreement	76-100% of trainees in agreement
----------------------------------	-----------------------------------	----------------------------------

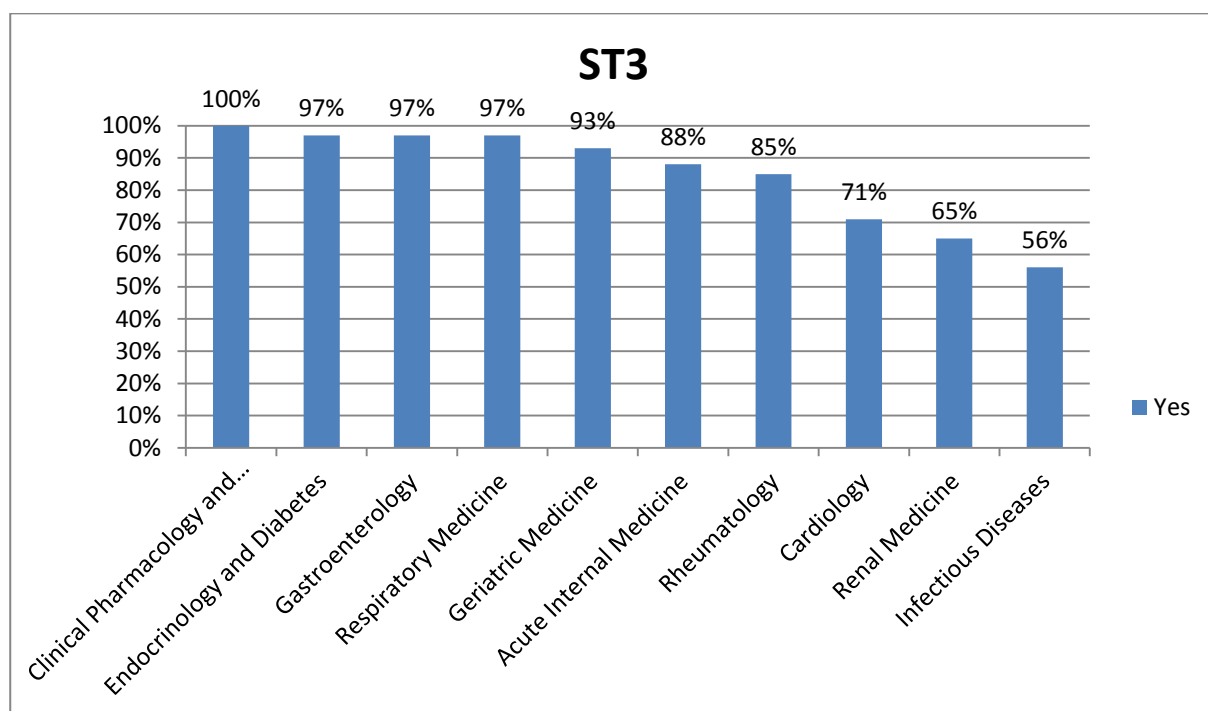


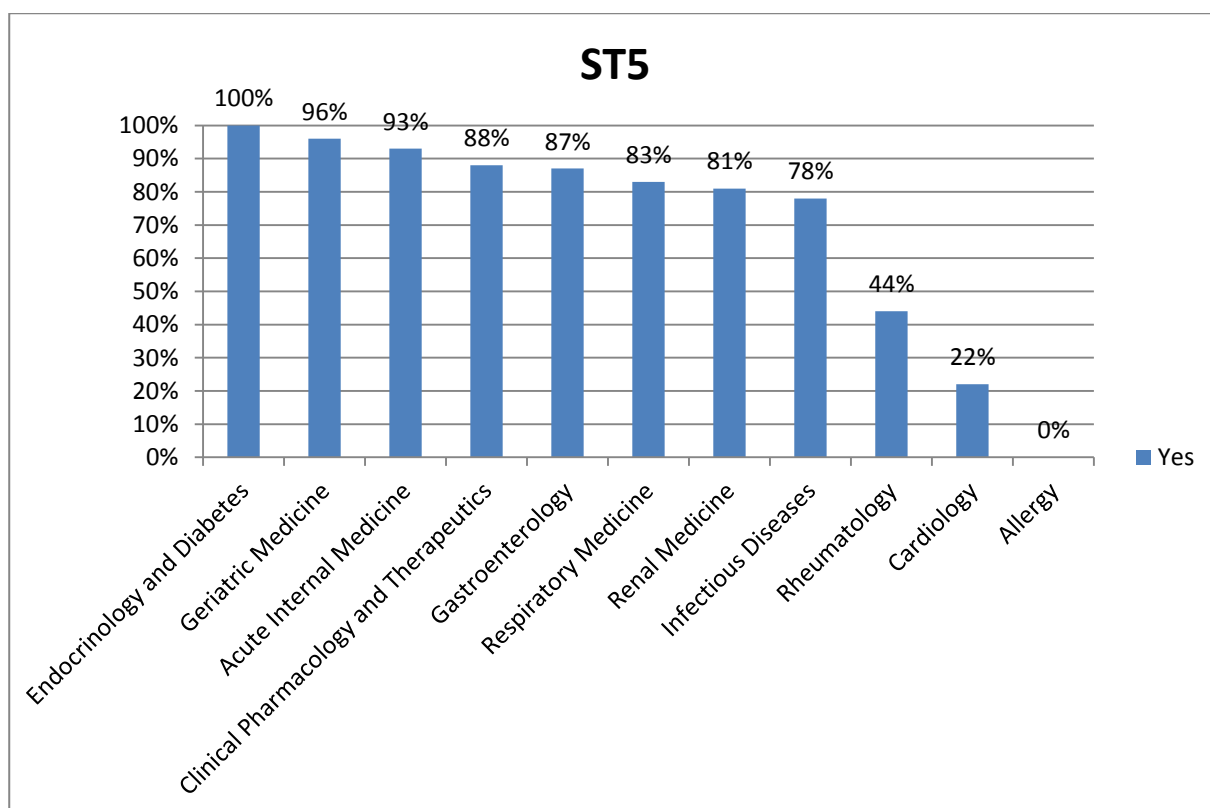
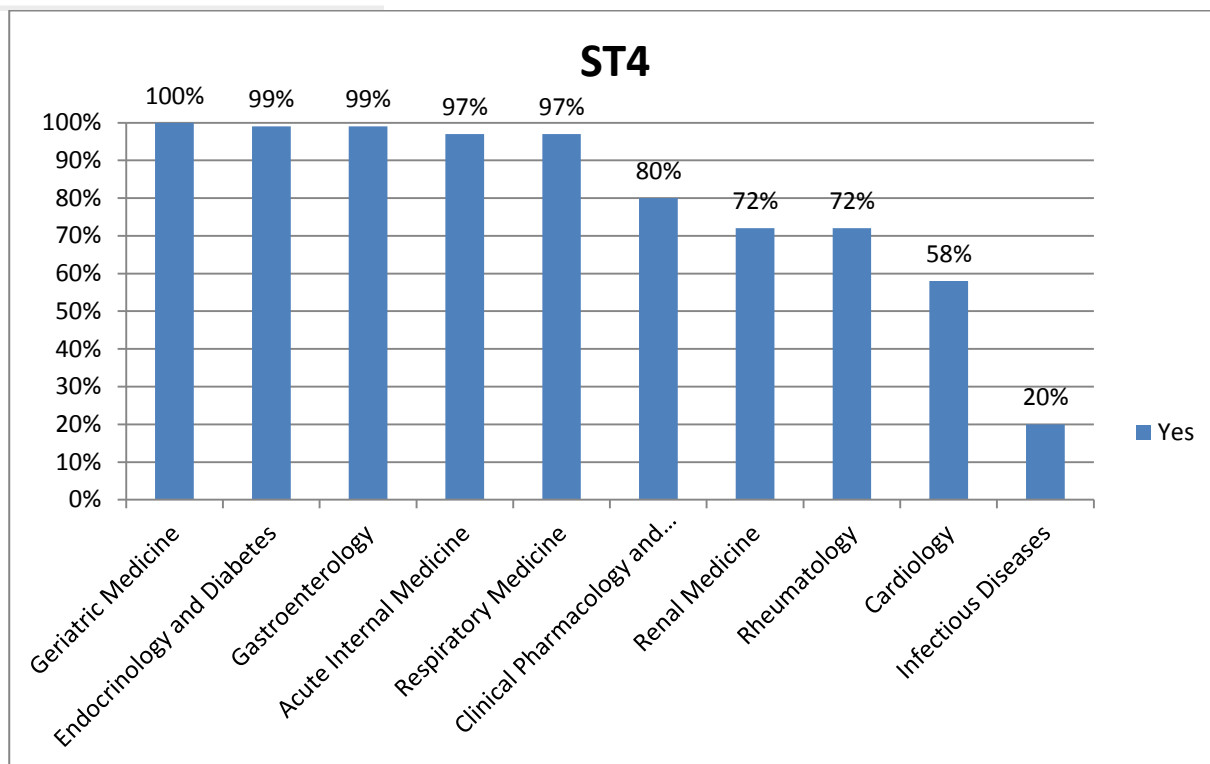
## Q1. Are you training in General (Internal) Medicine as specialty two?

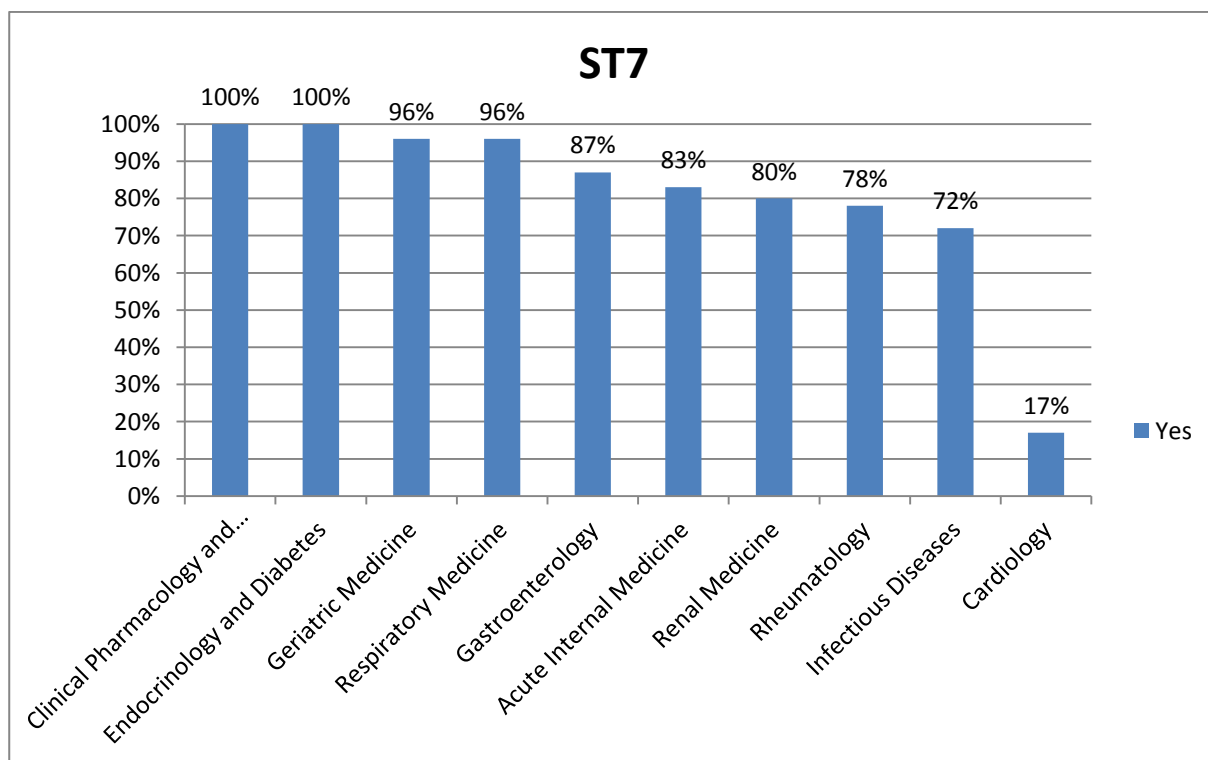
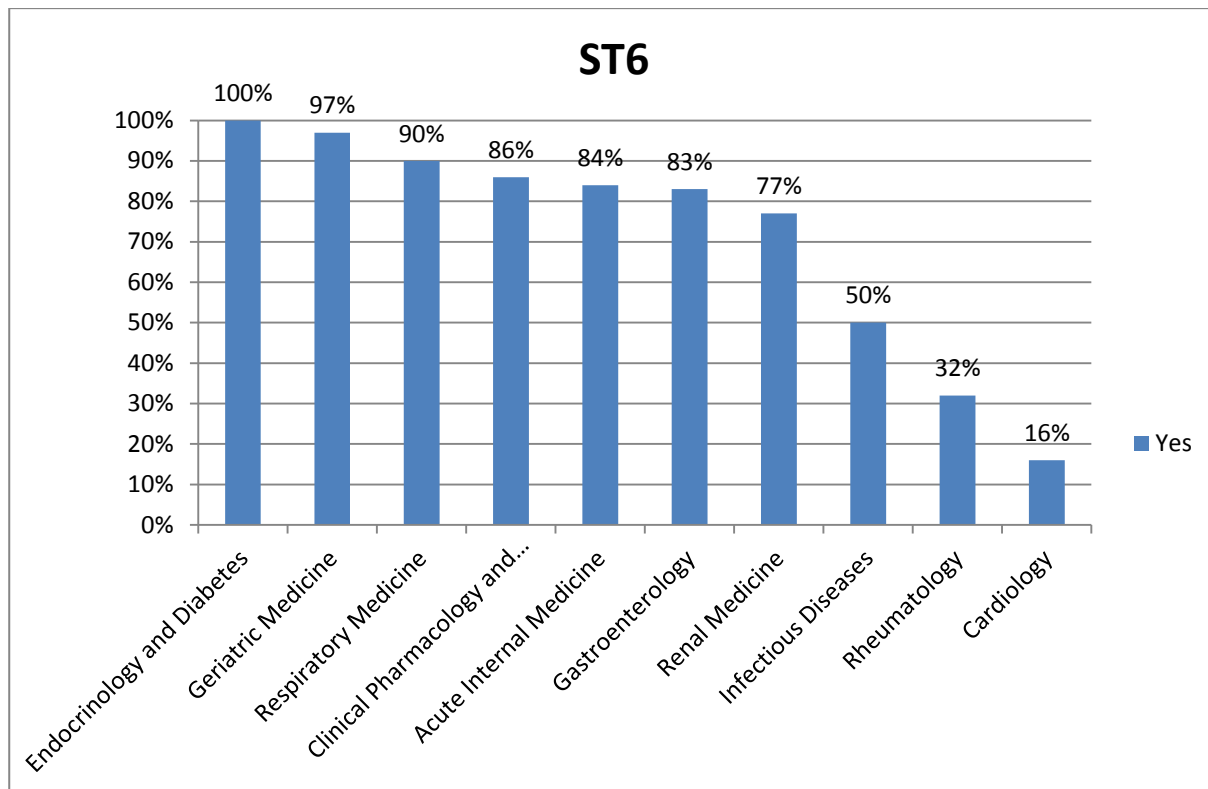
### Specialty



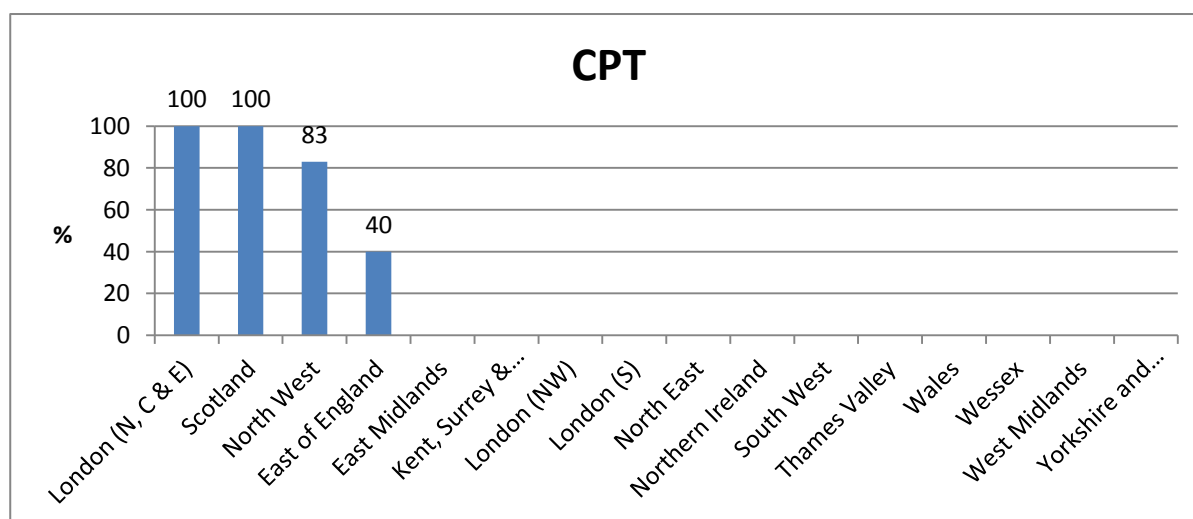
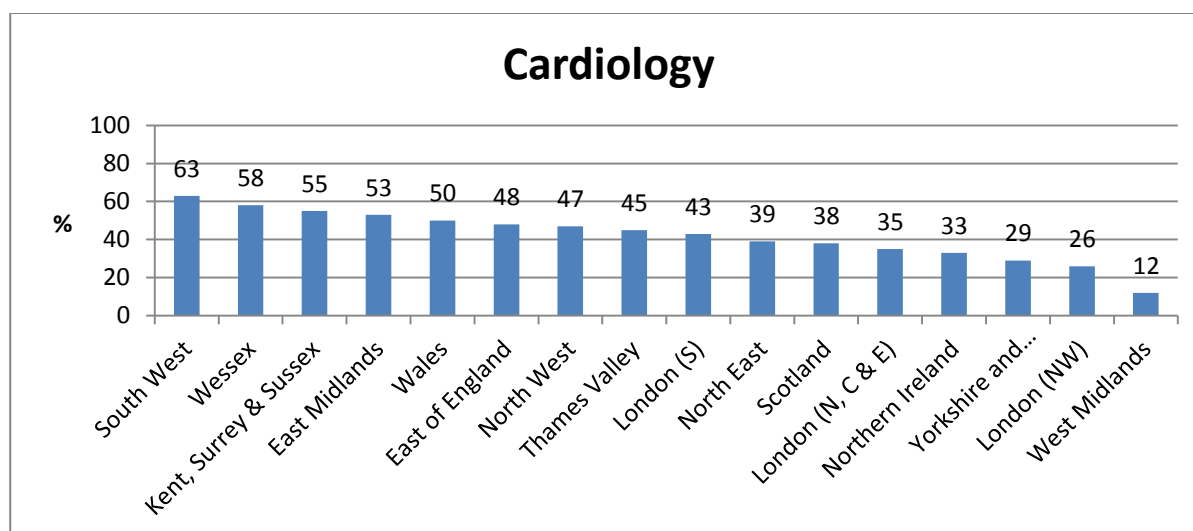
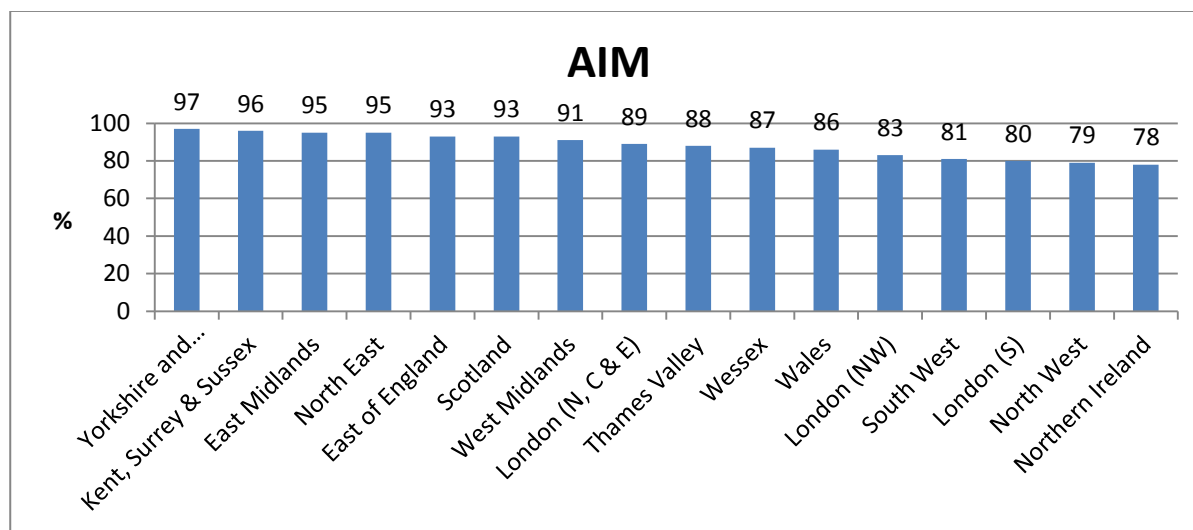
### Grade

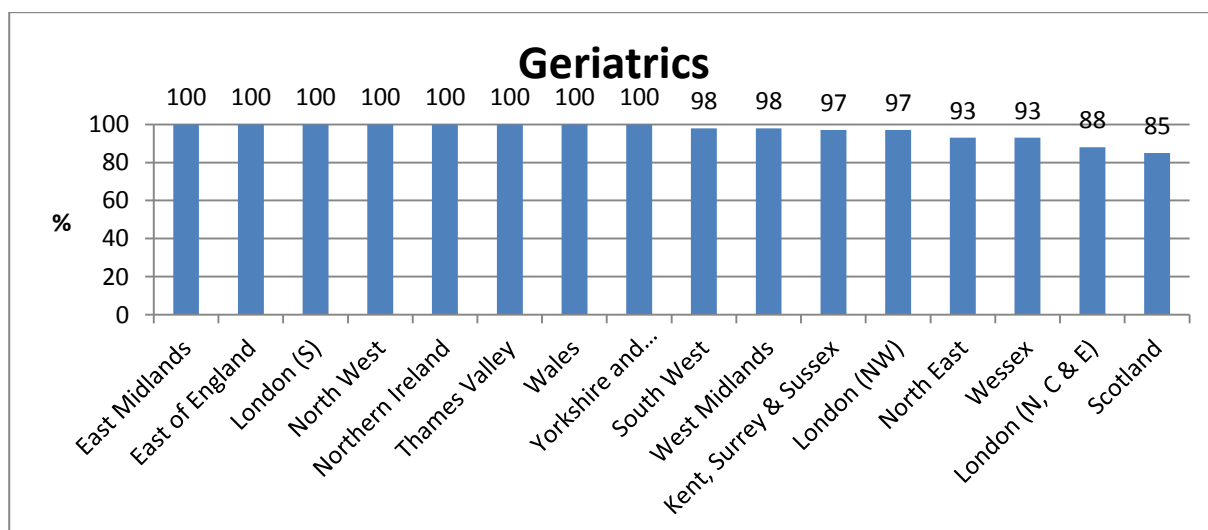
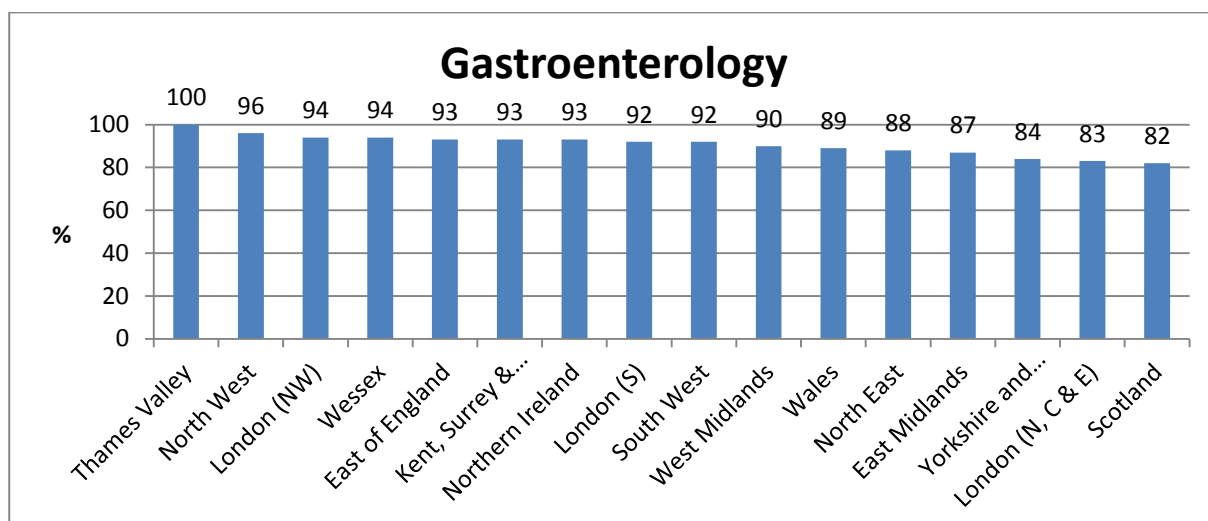
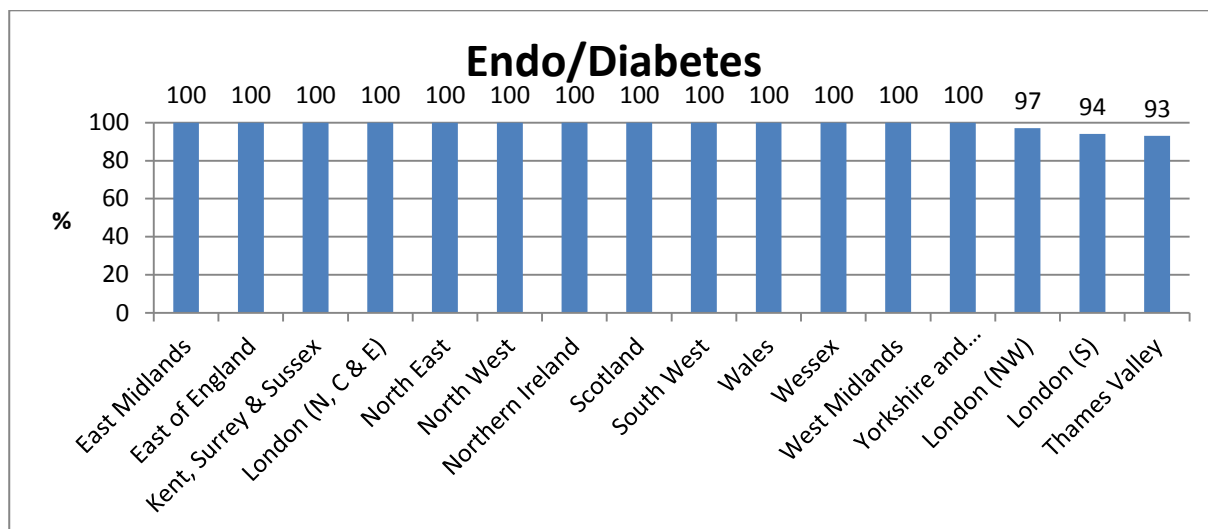




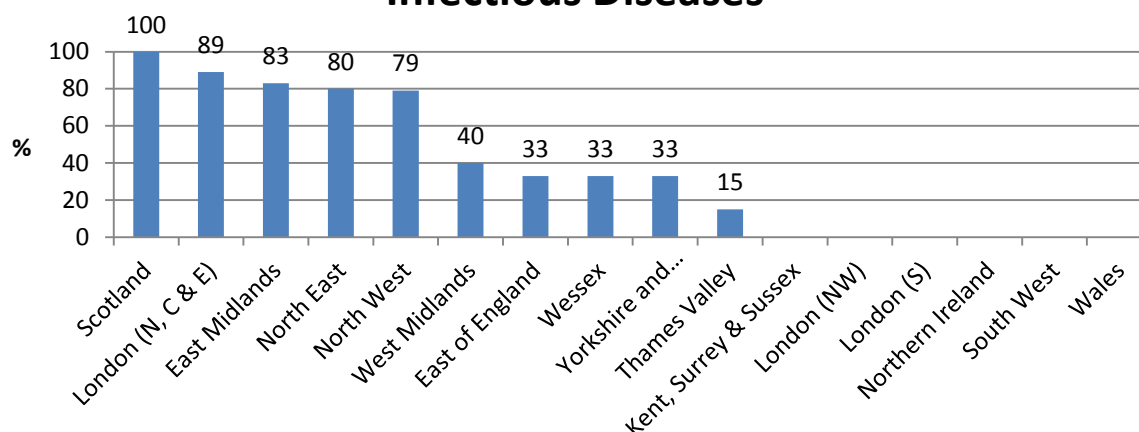


## Deanery

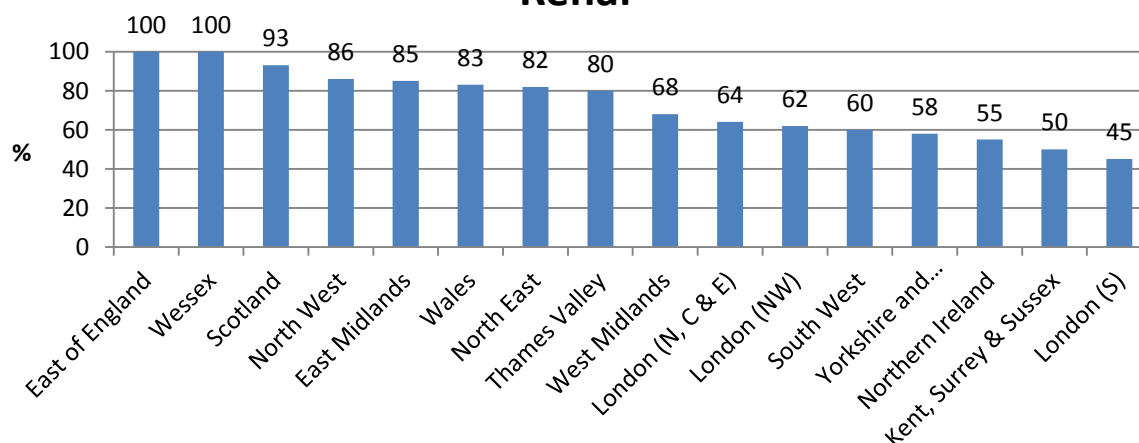




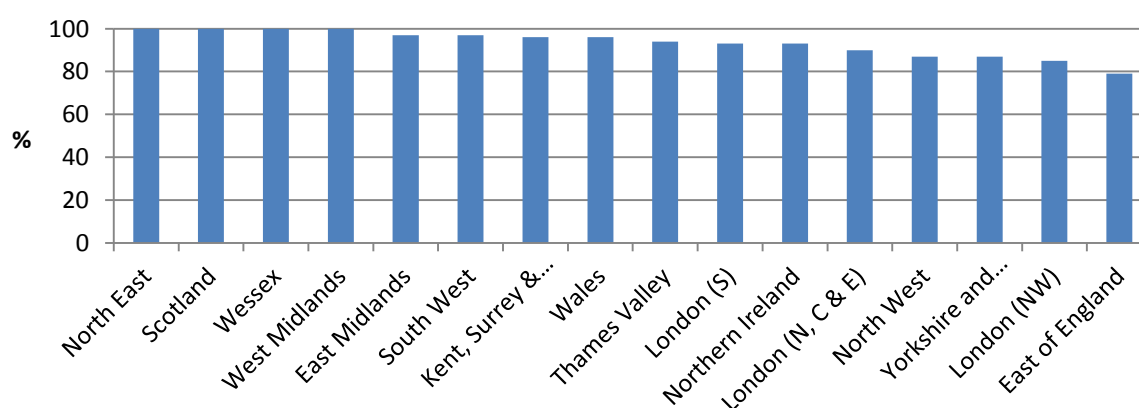
## Infectious Diseases

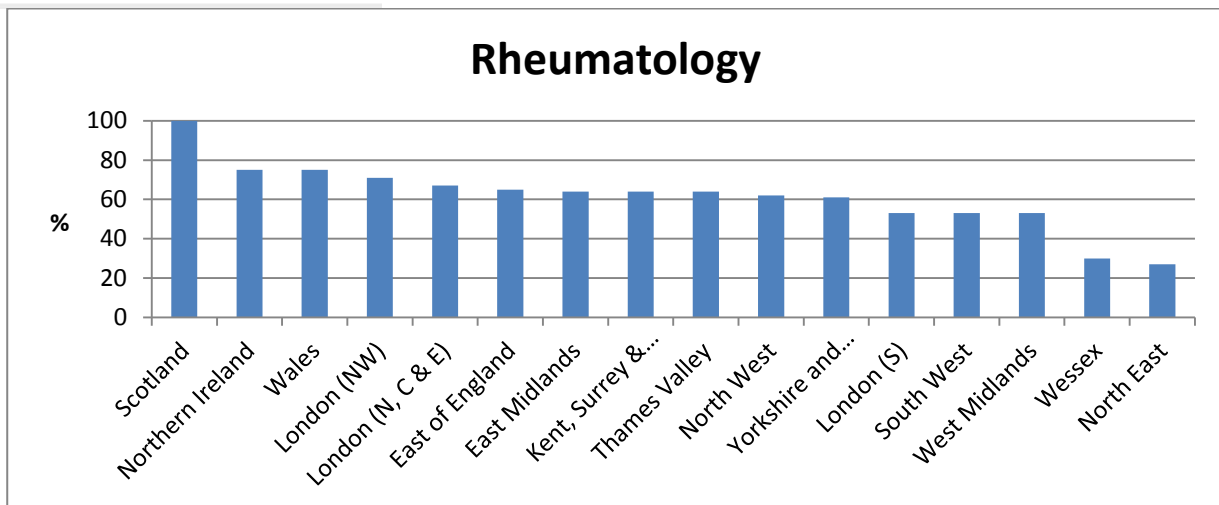


## Renal

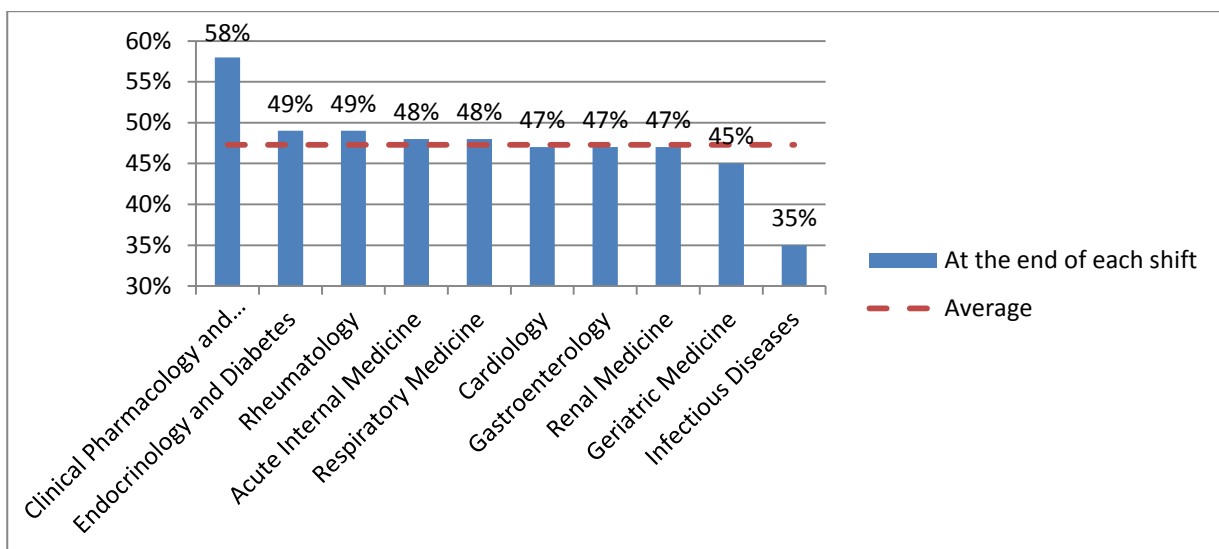
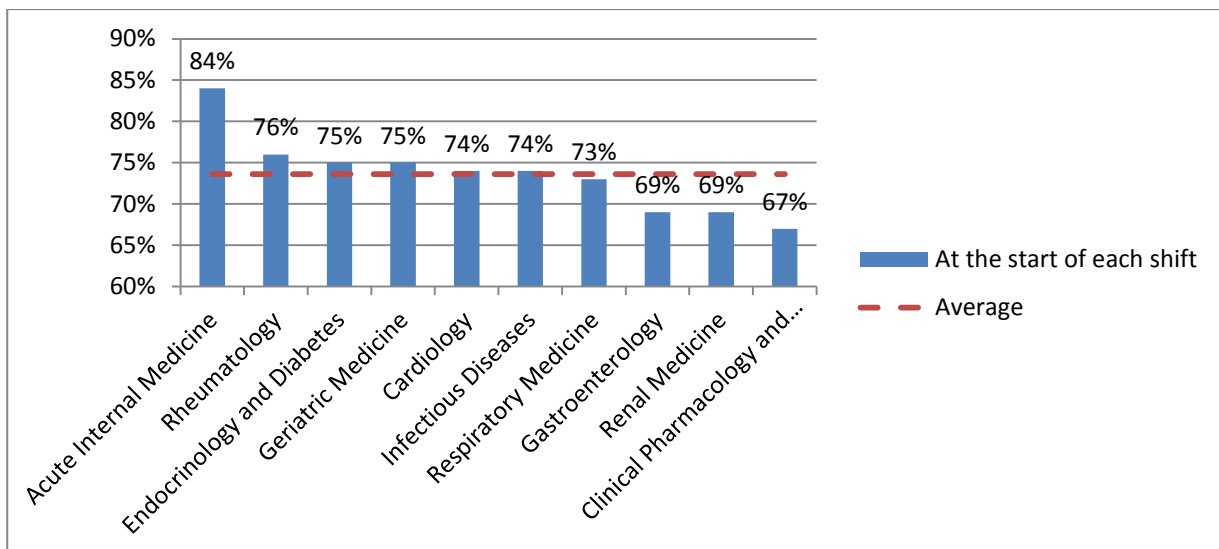


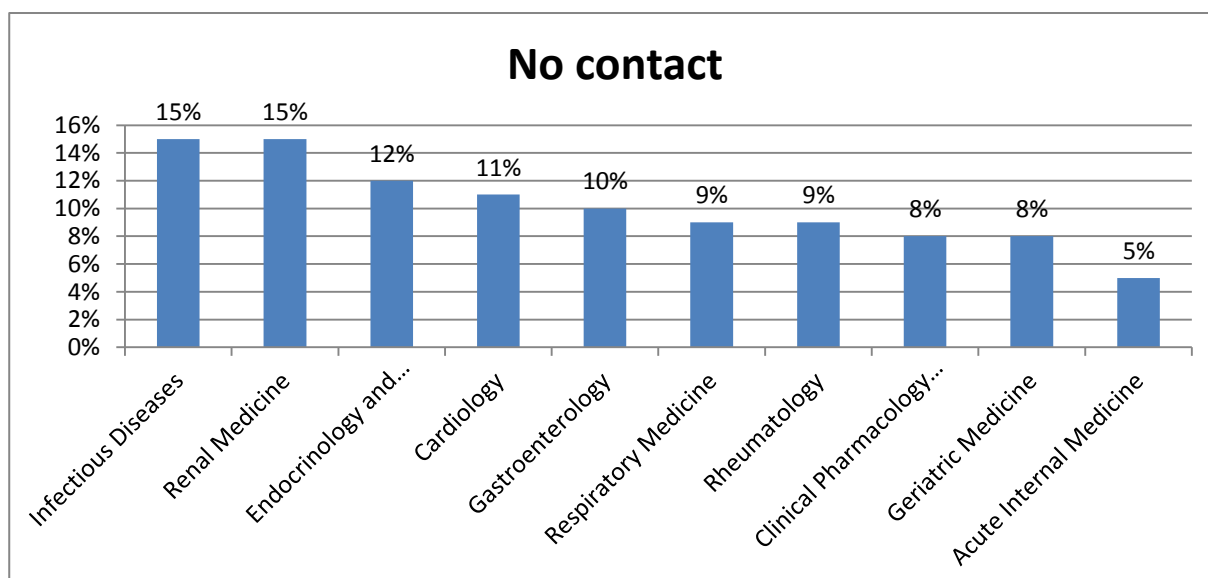
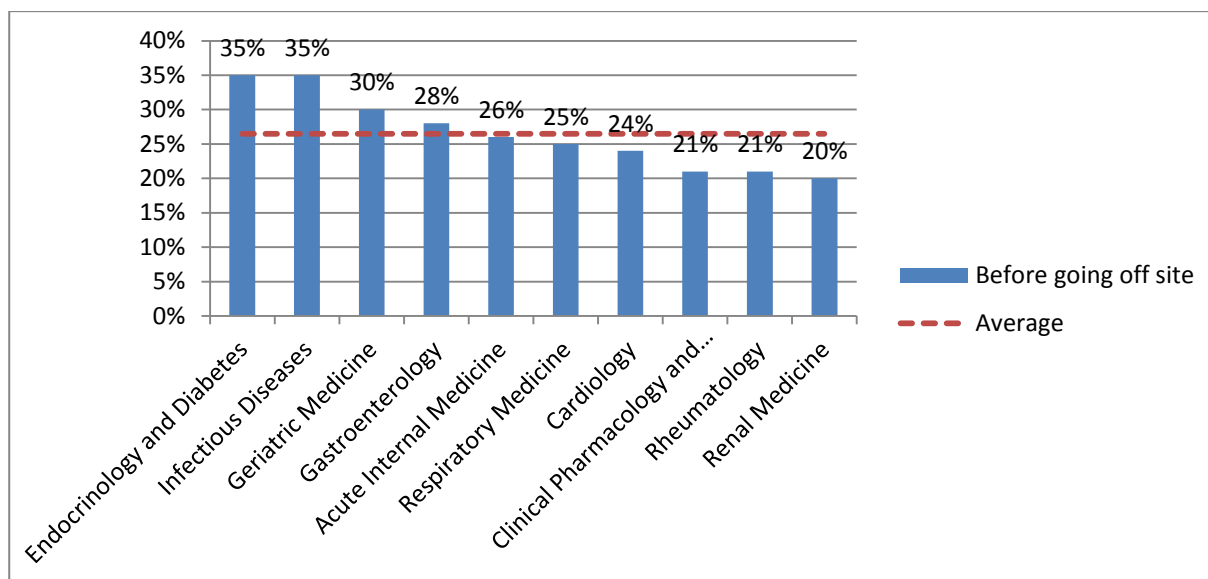
## Respiratory





**Q 4. Do you usually have contact with the consultant(s) on duty? (tick all that apply)**







**Q18. Which of the following are usually available to you at all times of the day? (tick all that apply)**

