

2017 NATIONAL TRAINEE SURVEY RESULTS

GERIATRIC MEDICINE

SPECIALTY SPECIFIC QUESTIONS

SEPTEMBER 2017


Introduction

The Specialty Specific Questions have been developed to test trainee's access to, participation in or confidence in the attainment of specific aspects of the specialty training curriculum.

The questions have been included Programme Specific Questions in the annual GMC National Trainee Survey. The details of these questions and the trainee responses (nationally, by Deanery/LETB and by grade can be found within this report.

649 Geriatric Medicine trainees (142 ST3, 139 ST4, 155 ST5, 128 ST6 84 ST7 and 1 ST8 trainee) an overall decrease of 2% compared to 2016, completed the 2017 survey. The numbers of trainees in each Deanery / LETB completing the survey were as follows:

Deanery / LETB	ST3 -7 2016	ST3 -7 2017	% Difference
Health Education East Midlands	40	37	-7%
Health Education East of England	31	44	+30%
Health Education Kent, Surrey and Sussex	45	39	-13%
Health Education N, C & E London	45	35	-22%
Health Education North East	35	32	-9%
Health Education North West	75	76	+1%
Health Education NW London	34	30	-12%
Health Education South London	37	41	+10%
Health Education South West	42	42	+0%
Health Education Thames Valley	24	24	+0%
Health Education Wessex	29	27	-7%
Health Education West Midlands	56	47	-16%
Health Education Yorkshire and the Humber	54	53	-2%
NHS Education for Scotland	60	65	+8%
Northern Ireland Medical & Dental Training Agency	15	15	+0%
Wales Deanery	38	42	+10%
Total	660	649	-2%

 Reduction of >10% trainees completing the NTS in 2017 compared to 2016

Specialty Specific Questions

Specialty Specific Questions (Geriatric Medicine)	% trainees agreeing overall	2015/2016 Difference	Agreement Highest	Agreement Lowest
1) Please indicate any training areas that you do not feel confident you will attain during your training programme (select all that apply) (ST3 – ST7)				
None, I am confident of attaining all areas	58% (375/649)	+ 1%	THA, WAL (71%)	London (NW) (37%)
Old age psychiatry	19% (126/649)	No change	London (NW) (40%)	Scotland (11%)
Continence	18% (117/649)	- 3%	London (NW) (33%)	North East (6%)
Community Geriatrics	17% (110/649)	- 1%	London (NW) (37%)	NIR, WAL (7%)
Tissue viability	16% (101/649)	No change	Northern Ireland (27%)	Wessex (7%)
Movement disorder	10% (68/649)	- 3%	LDN (NC&E, NW) (23%)	South Western (2%)
Rehabilitation	8% (52/649)	- 1%	South Western (19%)	NIR, WAL (0%)
Orthogeriatrics	6% (37/649)	- 7%	West Midlands (13%)	NE, NIR (0%)
Palliative care	6% (41/649)	No change	Northern Ireland (20%)	East of England (0%)
Stroke	5% (34/649)	- 1%	London (NC&E) (14%)	KSS (0%)
Planning transfers of care	4% (28/649)	No change	East Midlands (11%)	WAL, YAH (0%)
Comprehensive Geriatric Assessment	3% (20/649)	- 1%	LDN (NW,S), NIR (7%)	EMD, WAL, WES (0%)
Poor mobility	2% (13/649)	- 2%	LDN (NW), NIR (7%)	EMD, EOE, SCO, WAL (0%)
Falls	2% (12/649)	- 4%	LDN (NW), NIR (7%)	EMD, LDN (S), SW, WAL, WES, YAH (0%)
2) How frequently are you able to attend dedicated subspecialty sessions (e.g. palliative care, community)? (ST3 – ST7)				
Always	7% (45/649)	New for	London (S) (15%)	LDN (NC&E), NIR (0%)
Most of the time	55% (360/649)	2017	North East (72%)	London (NW) (50%)
Rarely	31% (203/649)		Northern Ireland (47%)	East Midlands (16%)
Never	6% (41/649)		KSS (13%)	NE, NIR, THA (0%)

Specialty Specific Questions	% trainees agreeing overall	2015/2016 Difference	Agreement Highest	Agreement Lowest
<p>3) How would you describe the ratio of G(I)M to Geriatric Medicine in your current rotation? (ST3 – ST7)</p> <p>Too much G(I)M About right Too little G(I)M</p>	<p>27% (177/649) 68% (443/649) 4% (29/649)</p>	<p>New for 2017</p>	<p>Wessex (26%) Northern Ireland (93%) East Midlands (51%)</p>	<p>NE, NW, NIR, WMD (0%) East Midlands (46%) NIR, WES (7%)</p>
<p>4) Do you think that the amount of G(I)M in your current rotation adversely affects your Geriatric Medicine training? (ST3 – ST7)</p> <p>Yes No Don't know</p>	<p>25% (159/649) 67% (435/649) 8% (55/649)</p>	<p>New for 2017</p>	<p>East Midlands (41%) Wales (85%) East Midlands (19%)</p>	<p>Wessex (0%) East Midlands (41%) SW, WMD (0%)</p>
<p>5) If you have applied for Out Of Programme (OOP) time from your Geriatric Medicine training, what was the outcome of your application? (ST3 – ST7)</p> <p>N/A (I have not applied for OOP time) Granted Declined Deferred</p>	<p>84% (544/649) 15% (100/649) <0.5% (2/649) <0.5% (3/649)</p>	<p>New for 2017</p>	<p>NW, NIR (93%) Wessex (30%) LDN (NC&E) (3%) WES (4%)</p>	<p>Wessex (67%) NW, NIR (7%) 14/16 regions (0%) 13/16 regions (0%)</p>

Quality Criteria	% trainees agreeing overall	2015/2016 Difference	Agreement Highest	Agreement Lowest
<p>6) If you have taken OOP time to undertake research or intend to in the future, which of the following best describes the main focus of this? (ST3 – ST7)</p> <p>N/A (have not taken nor intend to take time out for research)</p> <p>Laboratory or patient based research</p> <p>Medical management training/experience</p> <p>Medical education training/diploma</p> <p>Other</p>	<p>82% (535/649)</p> <p>5% (34/649)</p> <p>6% (39/649)</p> <p>3% (21/649)</p> <p>3% (20/649)</p>	<p>New for 2017</p>	<p>East of England (98%)</p> <p>North East (16%)</p> <p>YAH (17%)</p> <p>Wales (10%)</p> <p>Wessex (11%)</p>	<p>East Midlands (62%)</p> <p>LDN (NW), NW, NIR (0%)</p> <p>EOE, NW, NIR (0%)</p> <p>EOE, LDN (NW), NIR, SW, WES, YAH (0%)</p> <p>EOE, LDN (NC&E), NE, SWN, THA (0%)</p>
<p>7) In your ordinary working week are you able to find sufficient time for supporting professional activities such as audit or Quality Improvement? (ST3 – ST7)</p> <p>Yes</p> <p>No</p>	<p>60% (390/649)</p> <p>40% (259/649)</p>	<p>New for 2017</p>	<p>London (NC&E) (63%)</p> <p>North East (75%)</p>	<p>North East (25%)</p> <p>London (NC&E) (37%)</p>

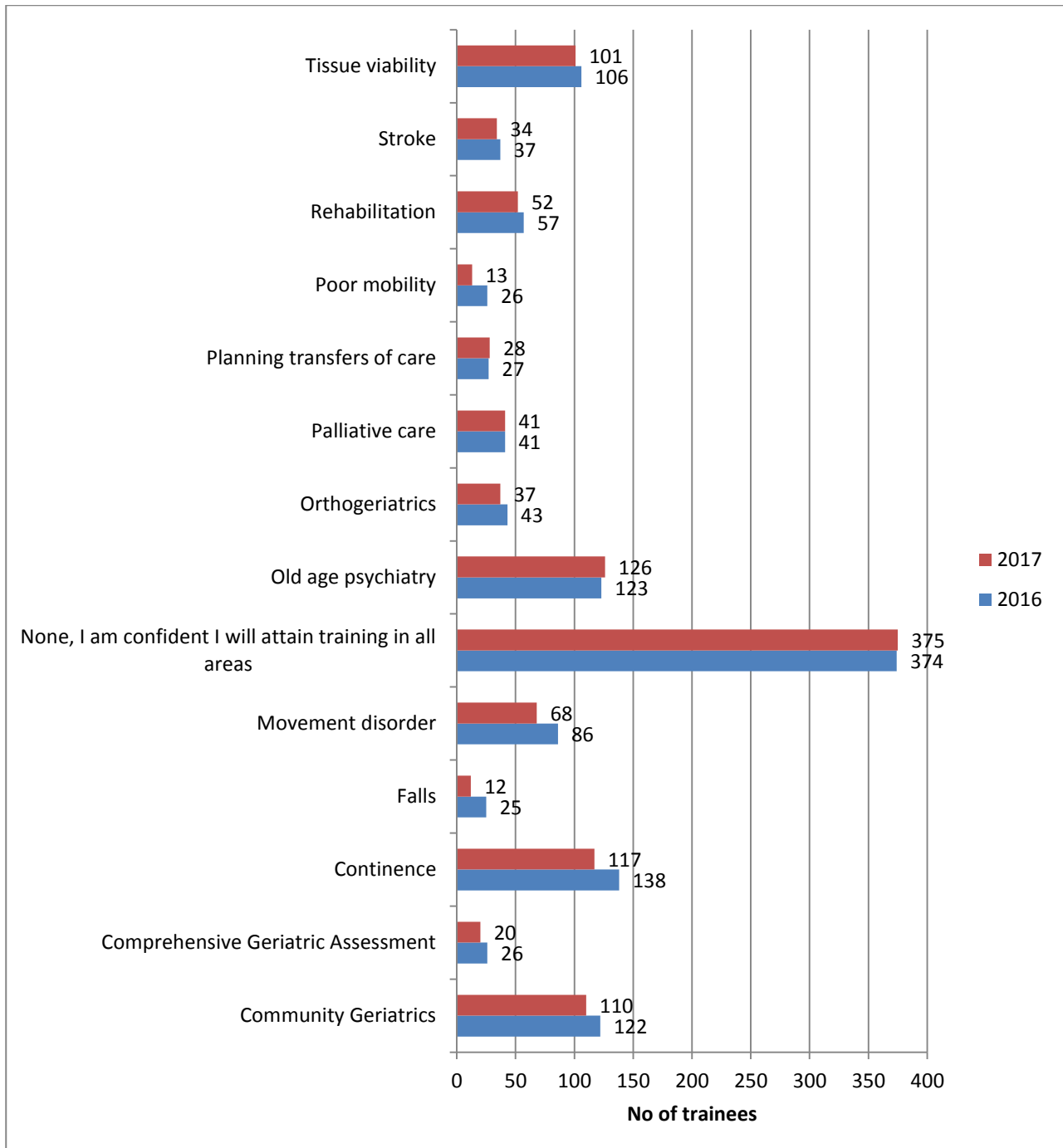
Quality Criteria	% trainees agreeing overall	2015/2016 Difference	Agreement Highest	Agreement Lowest
<p>8) Within the last year, how many non-clinical management or organisational meetings (e.g. about service development with commissioners, trust managers or boards etc) have you attended? (ST3 – ST7)</p> <p>0 1 2 3 4 More than 4</p>	<p>31% (198/649) 20% (132/649) 18% (114/649) 10% (64/649) 5% (33/649) 17% (108/649)</p>	<p>New for 2017</p>	<p>London (NC&E) (51%) North East (38%) North West (30%) Northern Ireland (20%) YAH (13%) South Western (31%)</p>	<p>Wessex (22%) London (NW) (10%) London (NC&E) (3%) London (NC&E) (3%) EOE, THA, WAL (0%) Northern Ireland (0%)</p>
<p>9) Overall, how satisfied or dissatisfied are you with your training in Geriatric Medicine? (ST3 – ST7)</p> <p>Very satisfied Satisfied Neither satisfied nor dissatisfied Dissatisfied Very dissatisfied</p>	<p>28% (179/649) 57% (369/649) 11% (71/649) 4% (24/649) 1% (6/649)</p>	<p>New for 2017</p>	<p>Thames Valley (46%) Wessex (74%) London (NC&E) (23%) London (NC&E) (12%) London (NC&E) (6%)</p>	<p>London (NC&E) (14%) South Western (41%) NE, THA (0%) THA, WAL, WES, WMID (0%) 13/16 regions (0%)</p>

The Geriatric Medicine curriculum is broad and challenging. Some areas are easier to gain training in than others.

Q1. Please indicate any training areas that you do not feel confident you will attain during your training programme (select all that apply) 2015: n=619, 2016: n=660

All questions were asked of the following grades: ST3, ST4, ST5, ST6, ST7. There were no ST8s in 2016.

All results



Grade

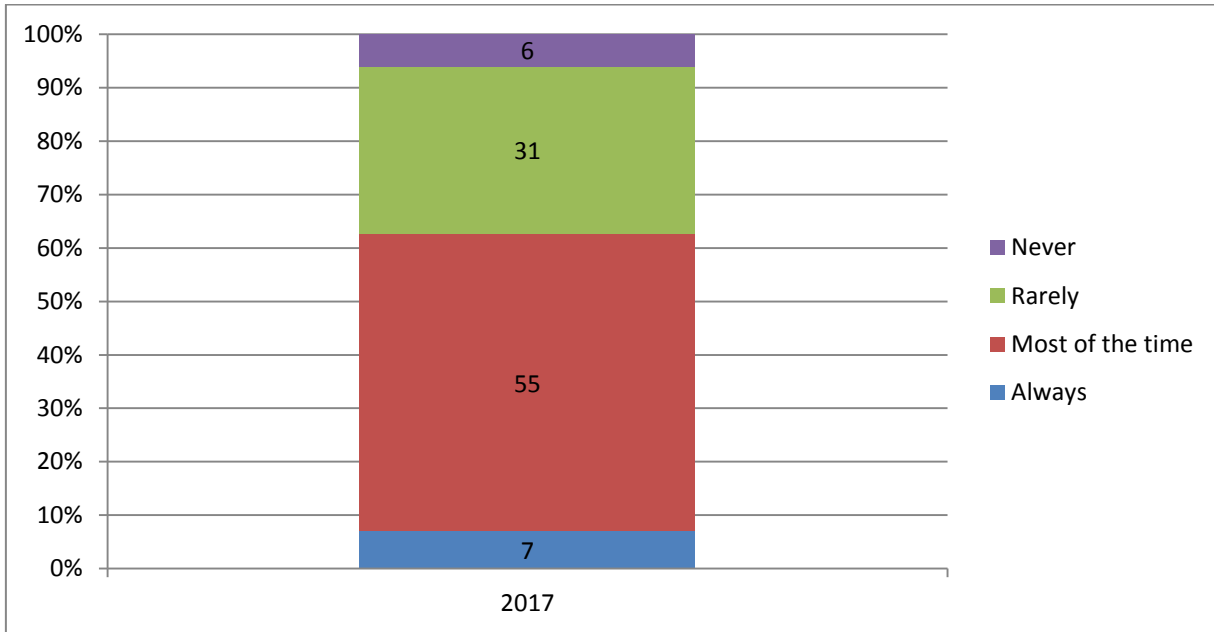
	ST3		ST4		ST5		ST6		ST7	
	162	142	160	139	147	155	108	128	83	84
Number of trainees =										
Year	2016	2017	2016	2017	2016	2017	2016	2017	2016	2017
Community Geriatrics	41 (25%)	26 (18%)	32 (20%)	24 (17%)	31 (21%)	32 (21%)	13 (12%)	23 (18%)	5 (6%)	5 (6%)
Comprehensive Geriatric Assessment	10 (6%)	10 (7%)	8 (5%)	6 (4%)	5 (3%)	3 (2%)	2 (15%)	0 (0%)	1 (1%)	1 (1%)
Contenance	28 (17%)	28 (20%)	43 (27%)	26 (19%)	41 (28%)	36 (23%)	17 (16%)	22 (17%)	9 (11%)	5 (6%)
Falls	8 (5%)	4 (3%)	6 (4%)	4 (3%)	8 (5%)	2 (1%)	17 (16%)	1 (1%)	9 (11%)	1 (1%)
Movement disorder	26 (16%)	21 (15%)	27 (17%)	15 (11%)	23 (16%)	21 (14%)	8 (7%)	8 (6%)	2 (2%)	3 (4%)
None, I am confident I will attain training in all areas	95 (59%)	79 (56%)	66 (41%)	73 (53%)	69 (47%)	73 (47%)	75 (70%)	73 (57%)	69 (83%)	67 (80%)
Old age psychiatry	36 (22%)	37 (26%)	44 (28%)	28 (20%)	29 (20%)	33 (21%)	12 (11%)	23 (18%)	2 (2%)	5 (6%)
Orthogeriatrics	16 (10%)	14 (10%)	15 (9%)	11 (8%)	9 (6%)	8 (5%)	2 (2%)	2 (2%)	1 (1%)	2 (2%)
Palliative care	9 (6%)	15 (11%)	16 (9%)	8 (6%)	11 (7%)	10 (6%)	3 (3%)	7 (5%)	2 (2%)	1 (1%)
Planning transfers of care	10 (6%)	11 (8%)	9 (6%)	9 (6%)	4 (3%)	4 (3%)	3 (3%)	3 (2%)	1 (1%)	1 (1%)
Poor mobility	9 (6%)	6 (4%)	9 (6%)	4 (3%)	6 (4%)	2 (1%)	2 (2%)	0 (0%)	0 (0%)	1 (1%)
Rehabilitation	19 (12%)	19 (13%)	20 (12%)	13 (9%)	13 (9%)	13 (8%)	4 (4%)	6 (5%)	1 (1%)	1 (1%)
Stroke	16 (10%)	14 (9%)	13 (8%)	8 (6%)	6 (4%)	10 (6%)	2 (2%)	1 (1%)	0 (0%)	1 (1%)
Tissue viability	26 (16%)	29 (20%)	40 (25%)	24 (17%)	23 (16%)	27 (17%)	13 (12%)	18 (14%)	4 (5%)	3 (4%)
Grand total	349	313	348	262	278	274	158	187	98	97

	Higher % of trainees not confident they will attain area during their training programme
	Lower % of trainees not confident they will attain area during their training programme
	No change to % of trainees not confident they will attain area during their training programme
	Increase in confidence of attaining training in all areas of the curriculum
	Decrease in confidence of attaining training in all areas of the curriculum

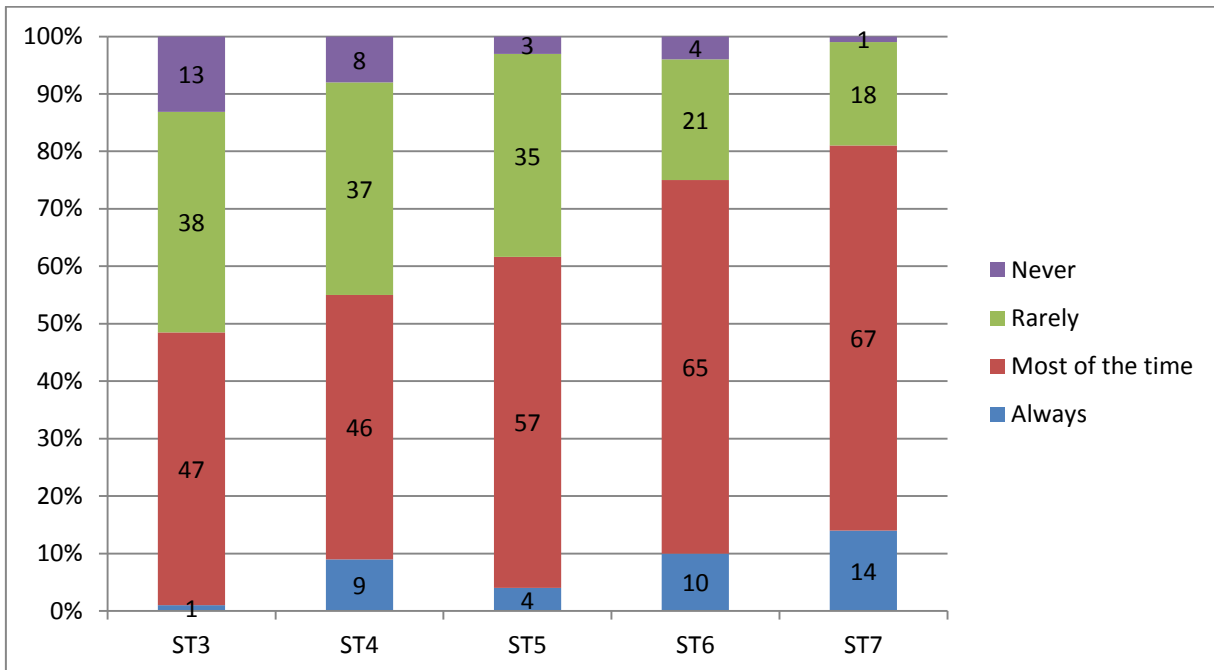
Q2. How frequently are you able to attend dedicated subspecialty sessions (e.g. palliative care, community)?

(This question was presented to trainees of the following grades: ST3, ST4, ST5, ST6, ST7) 2017: n=649

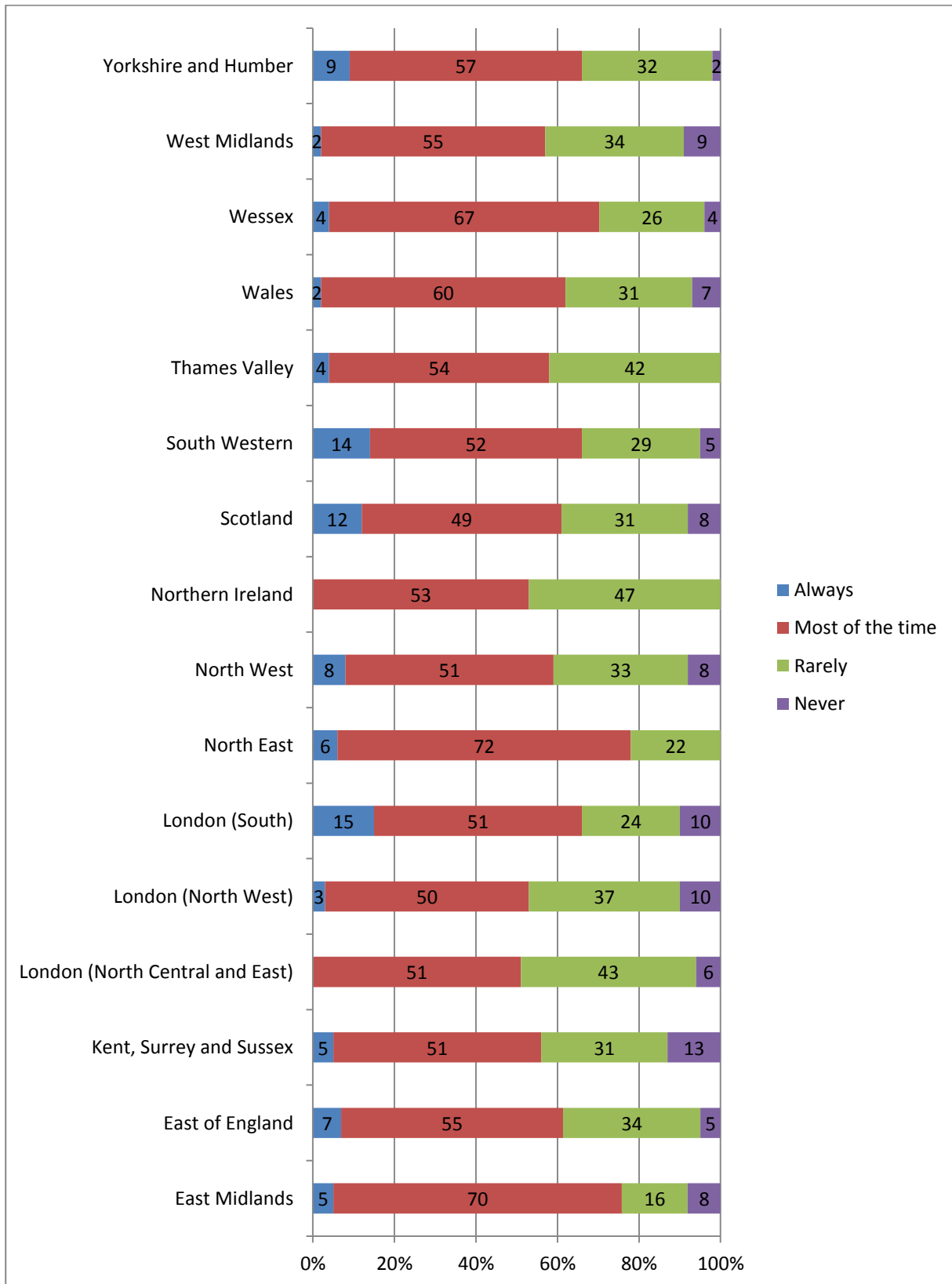
All results



Grade



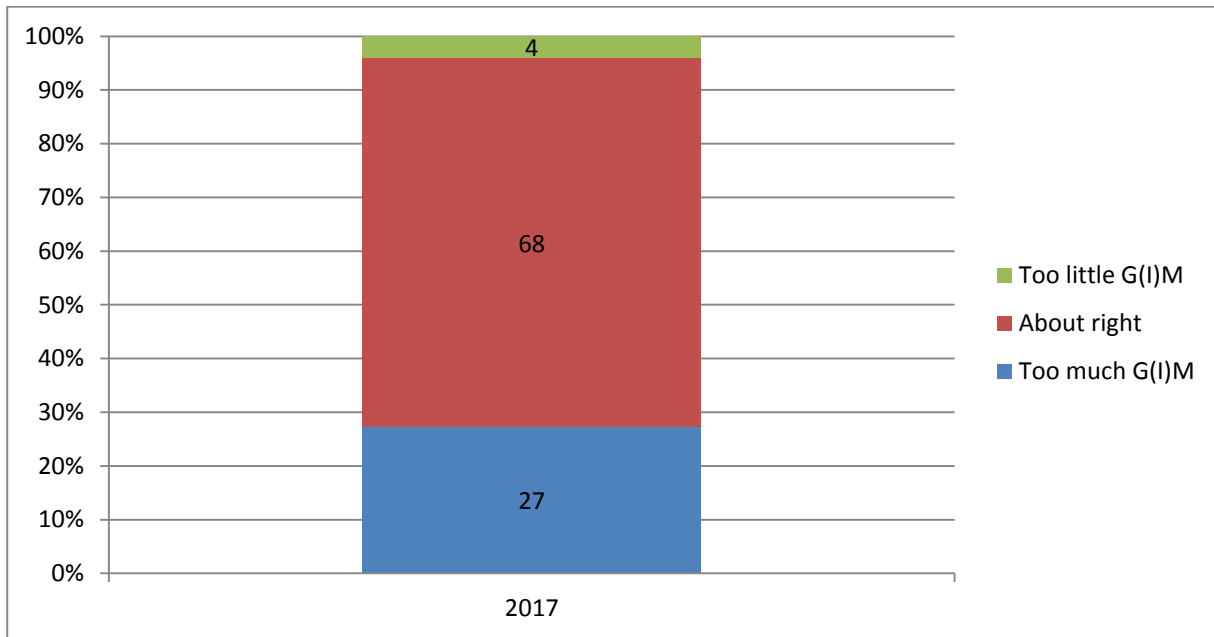
Deanery / LETB



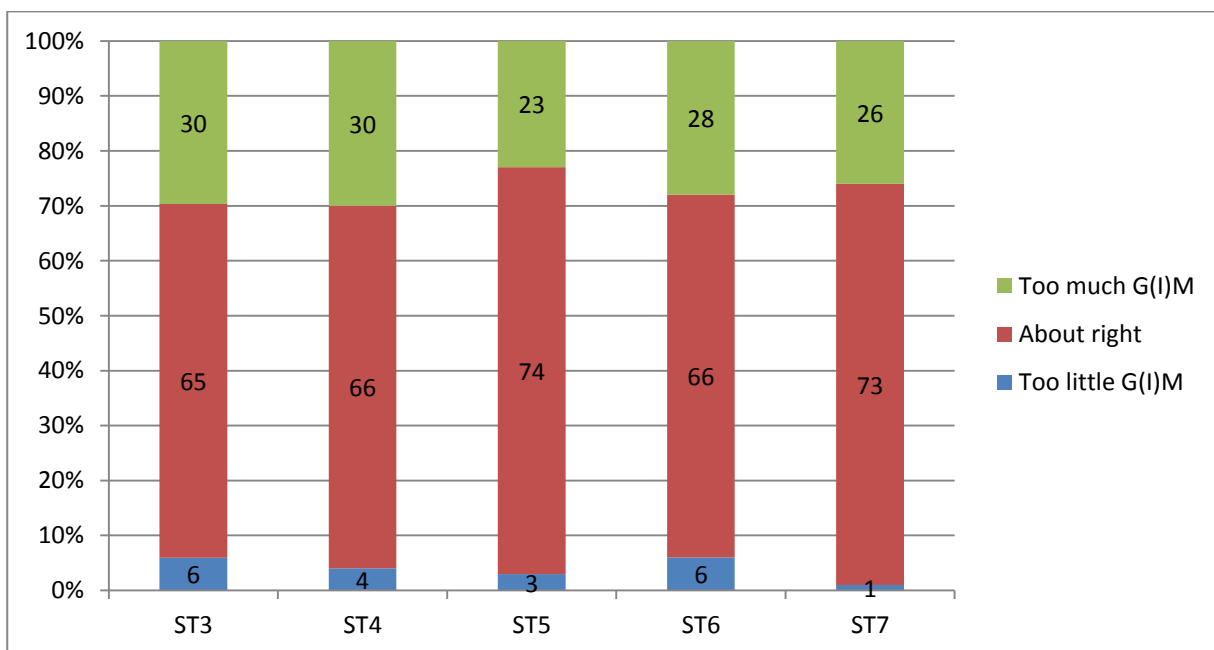
Q3. How would you describe the ratio of G(I)M to Geriatric Medicine in your current rotation?

(This question was presented to trainees of the following grades: ST3, ST4, ST5, ST6, ST7) 2017: n=649

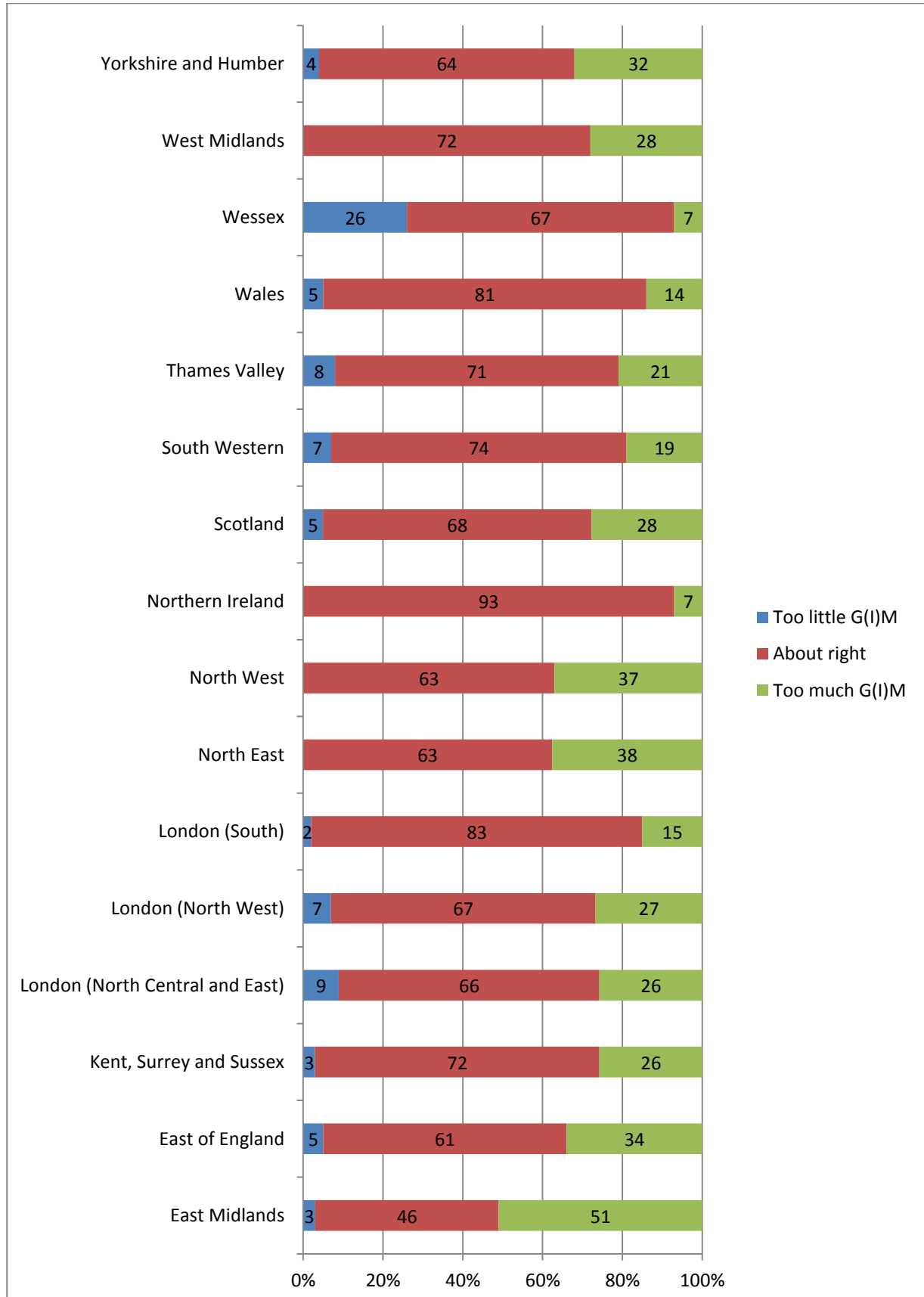
All results



Grade



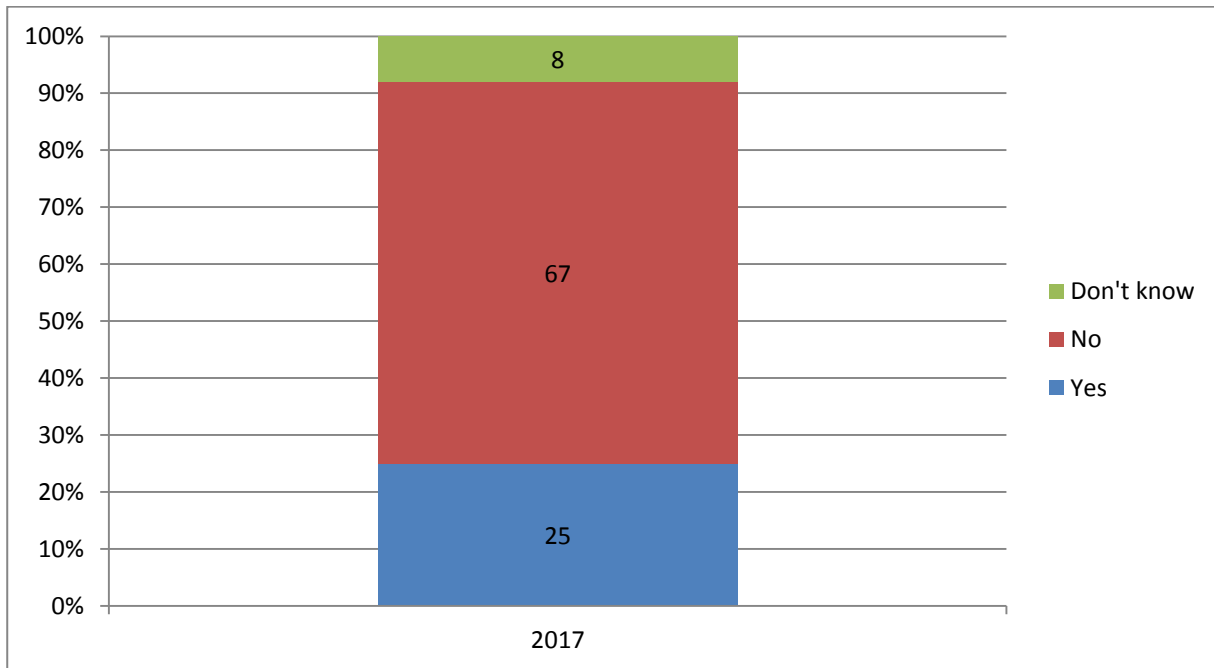
Deanery / LETB



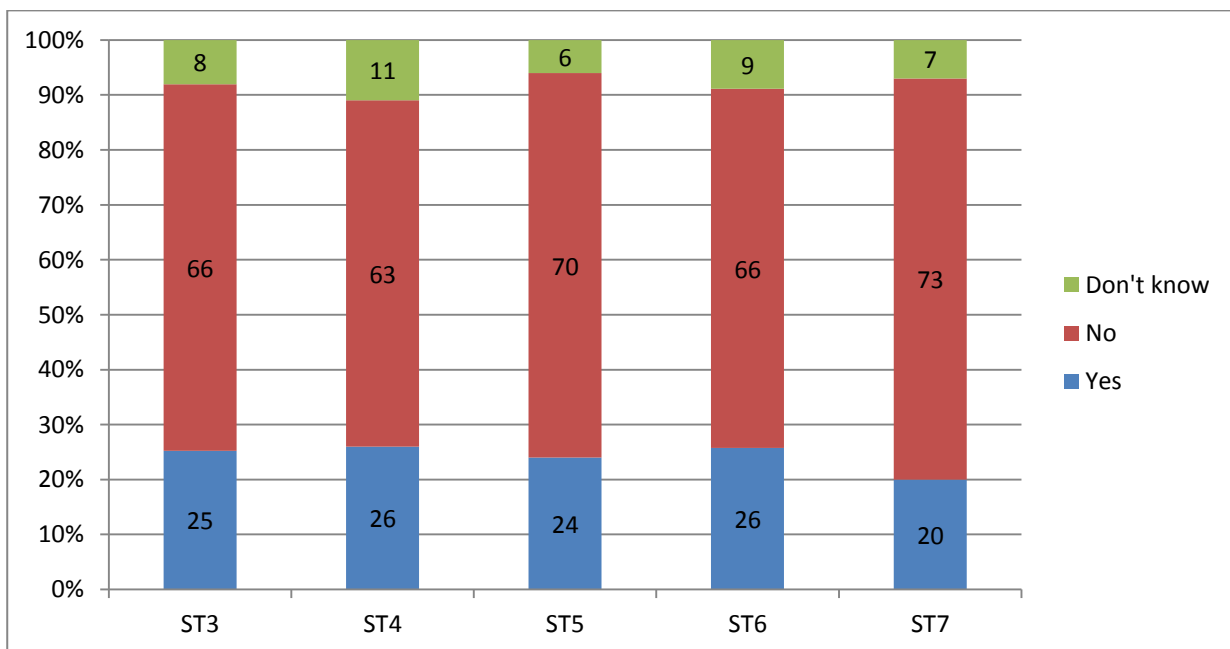
Q4. How would you describe the ratio of G(I)M to Geriatric Medicine in your current rotation?

(This question was presented to trainees of the following grades: ST3, ST4, ST5, ST6, ST7) 2017: n=649

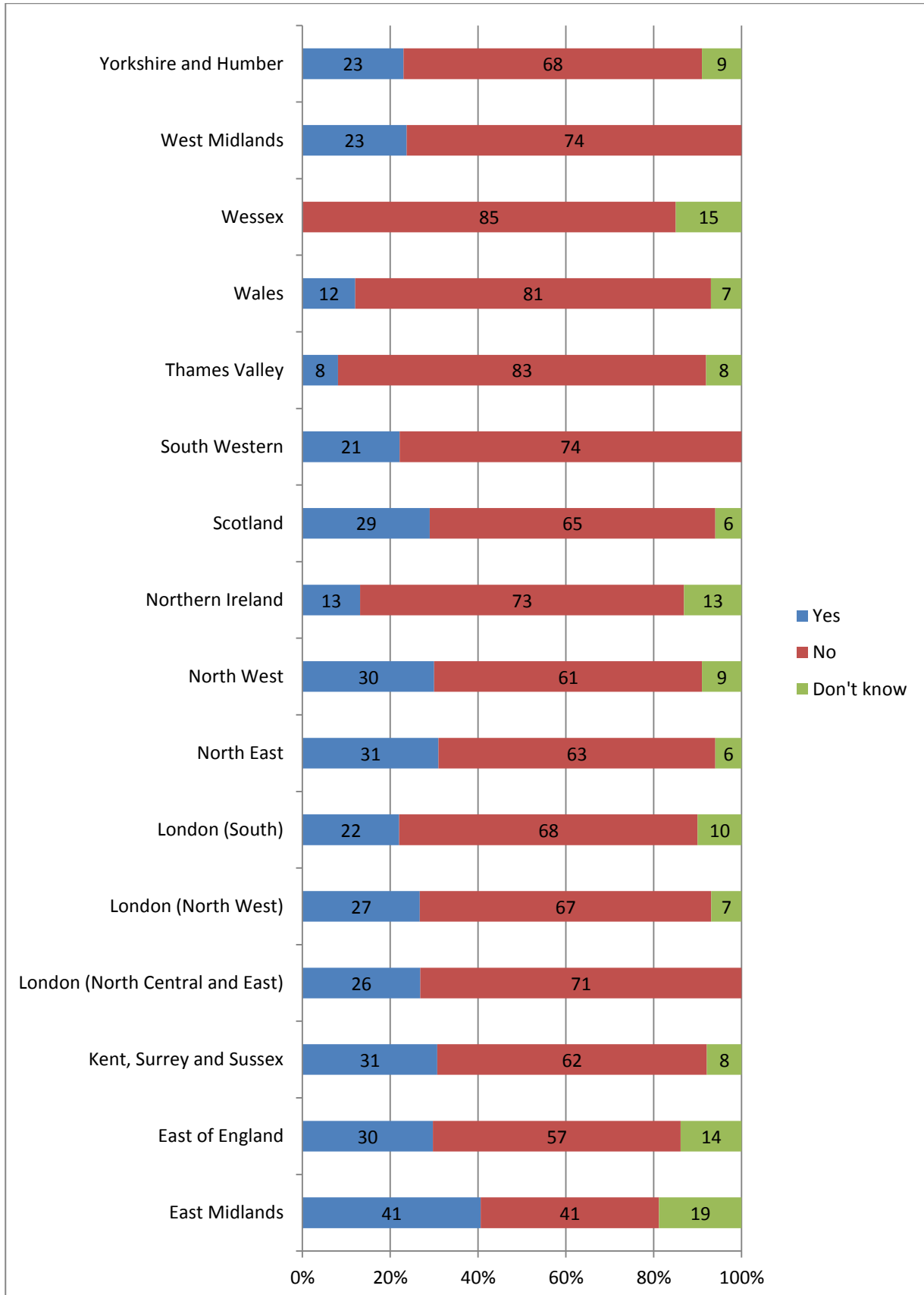
All results



Grade



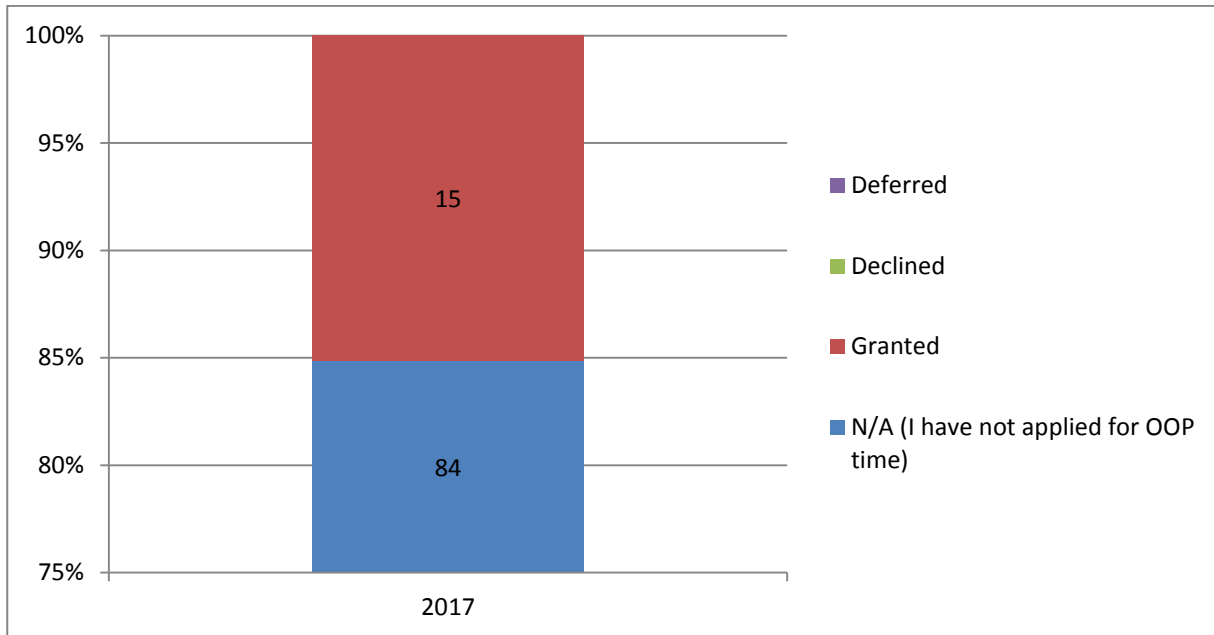
Deanery / LETB



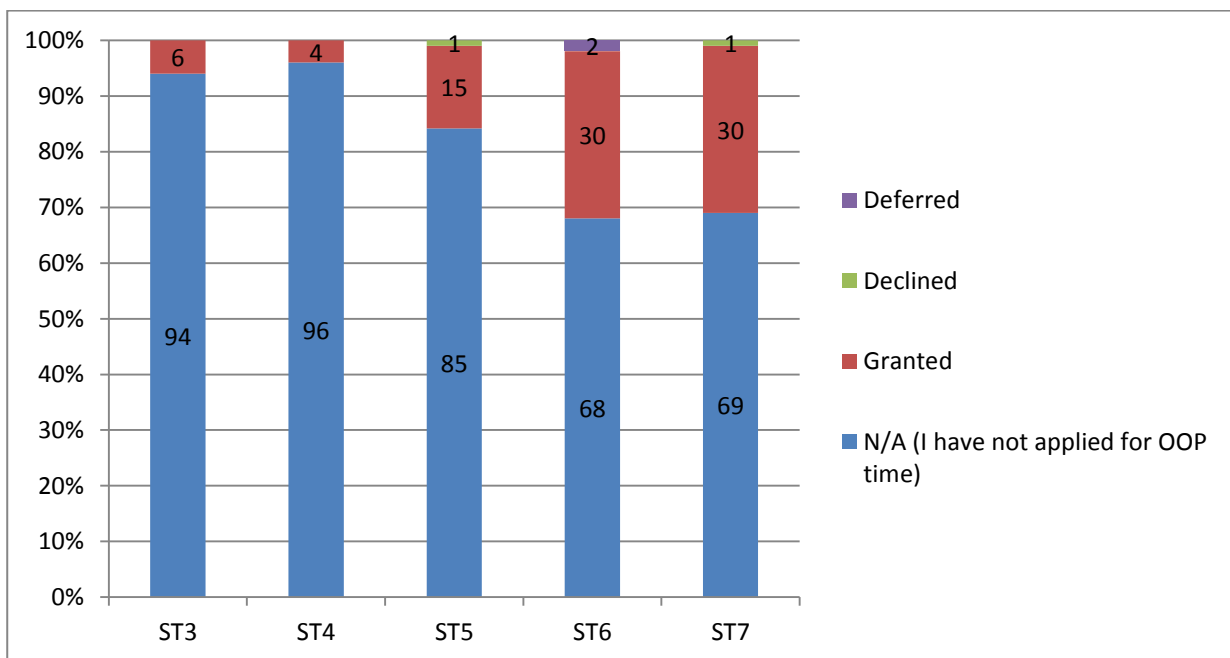
Q5. If you have applied for Out Of Programme (OOP) time from your Geriatric Medicine training, what was the outcome of your application?

(This question was presented to trainees of the following grades: ST3, ST4, ST5, ST6, ST7) 2017: n=649

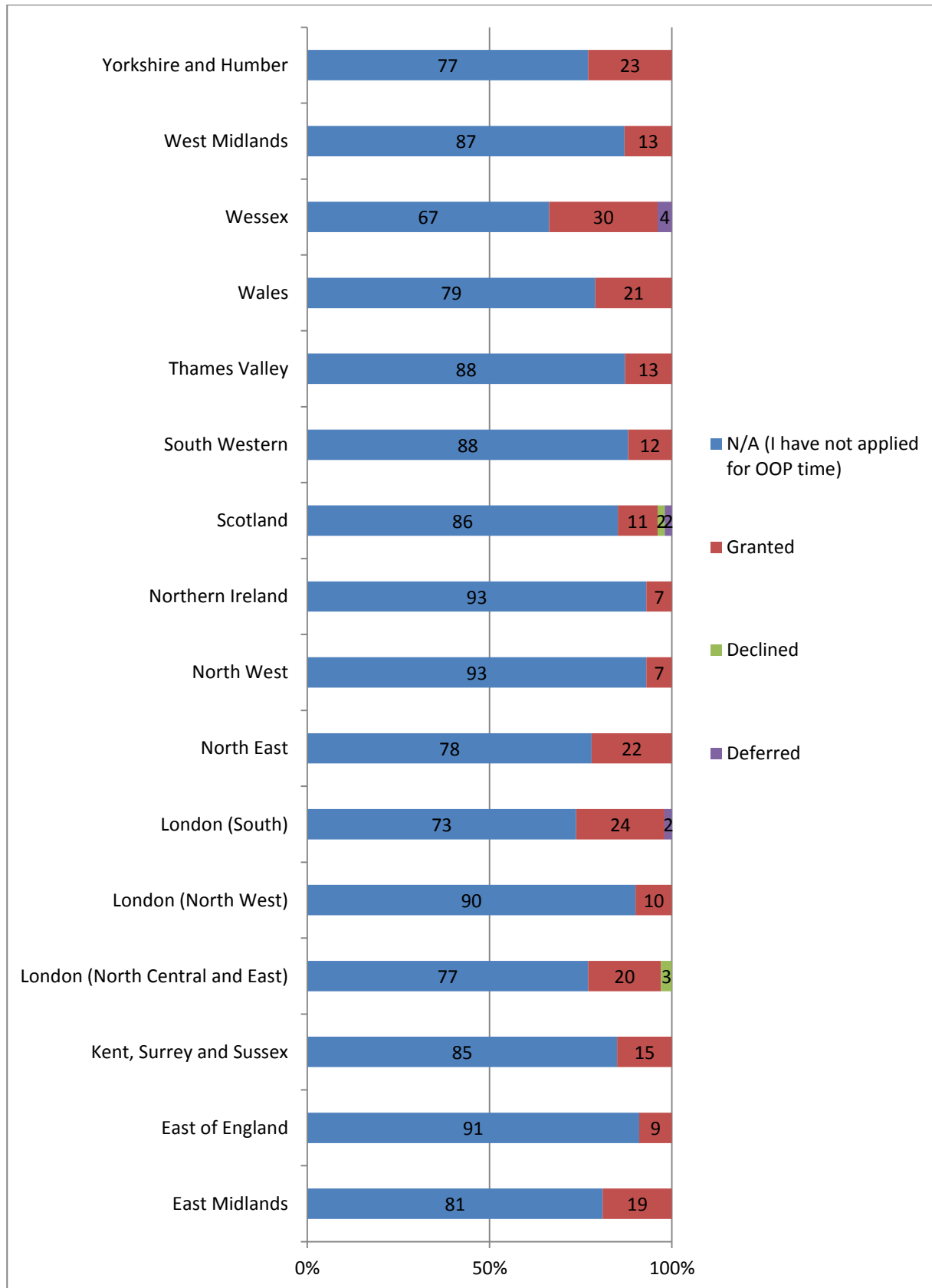
All results



Grade



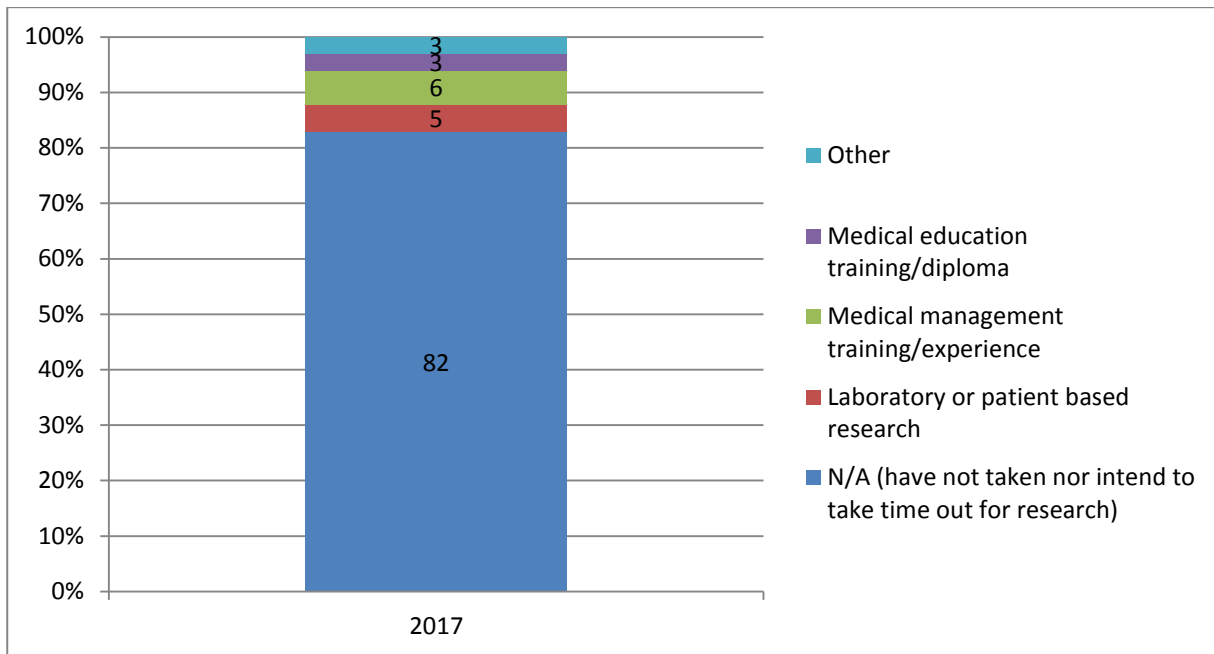
Deanery / LETB



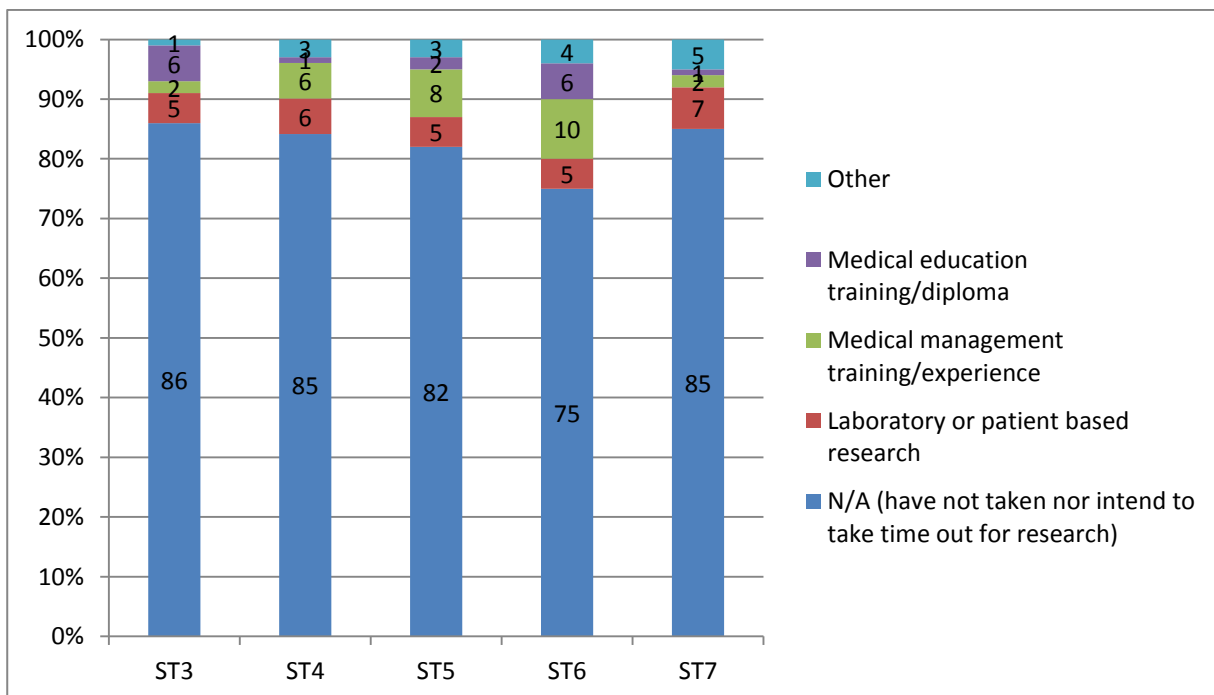
Q.6 If you have taken OOP time to undertake research or intend to in the future, which of the following best describes the main focus of this?

(This question was presented to trainees of the following grades: ST3, ST4, ST5, ST6, ST7) 2017: n=649

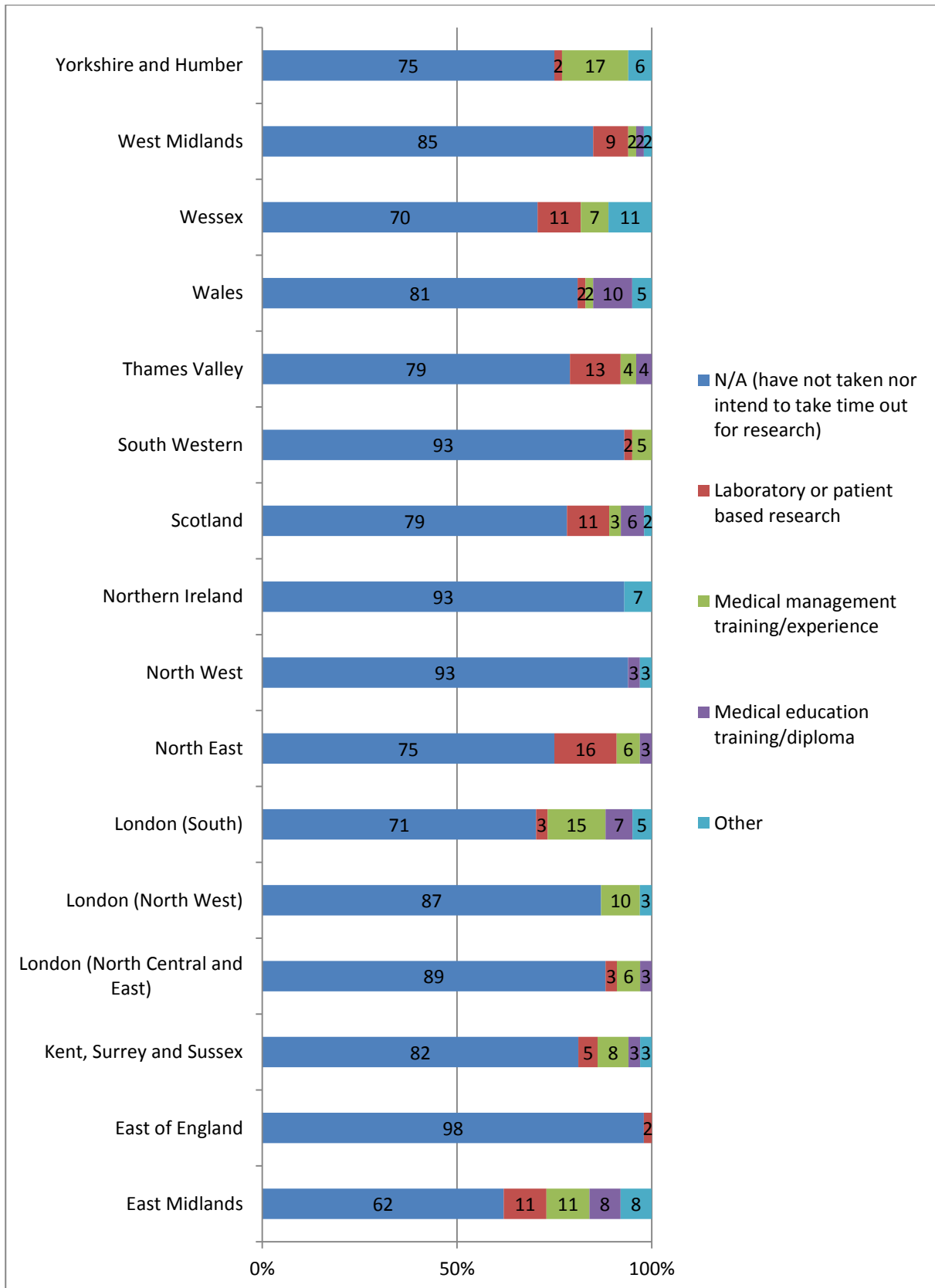
All results



Grade



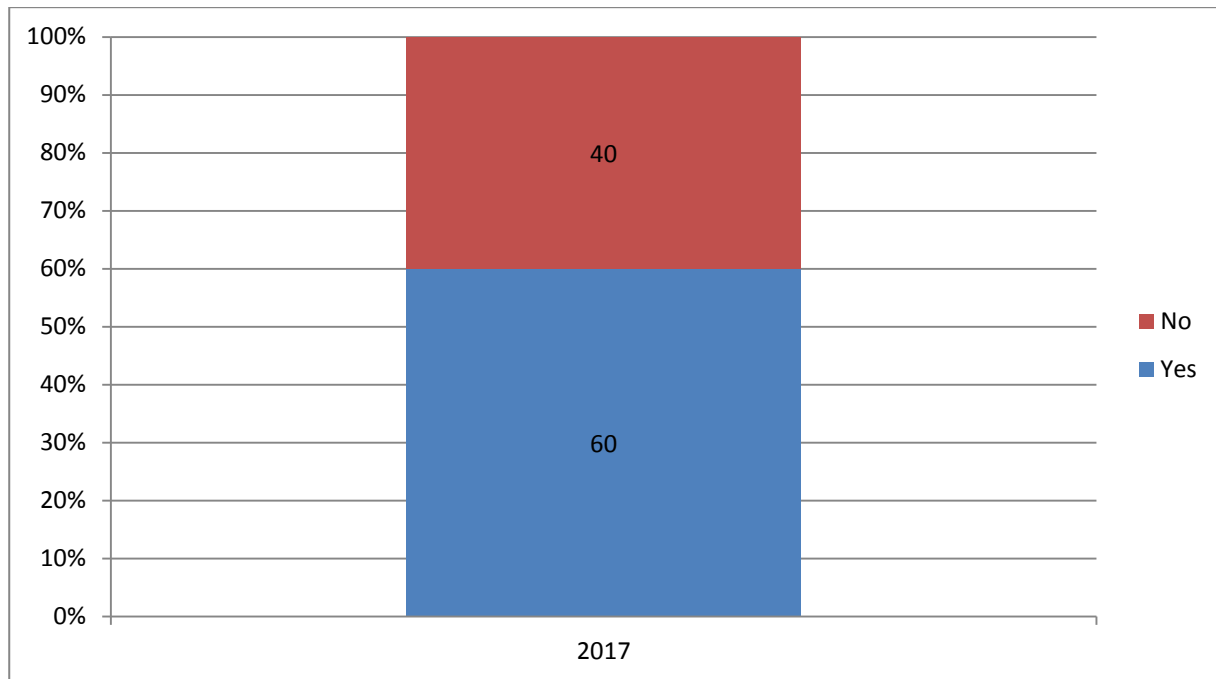
Deanery / LETB



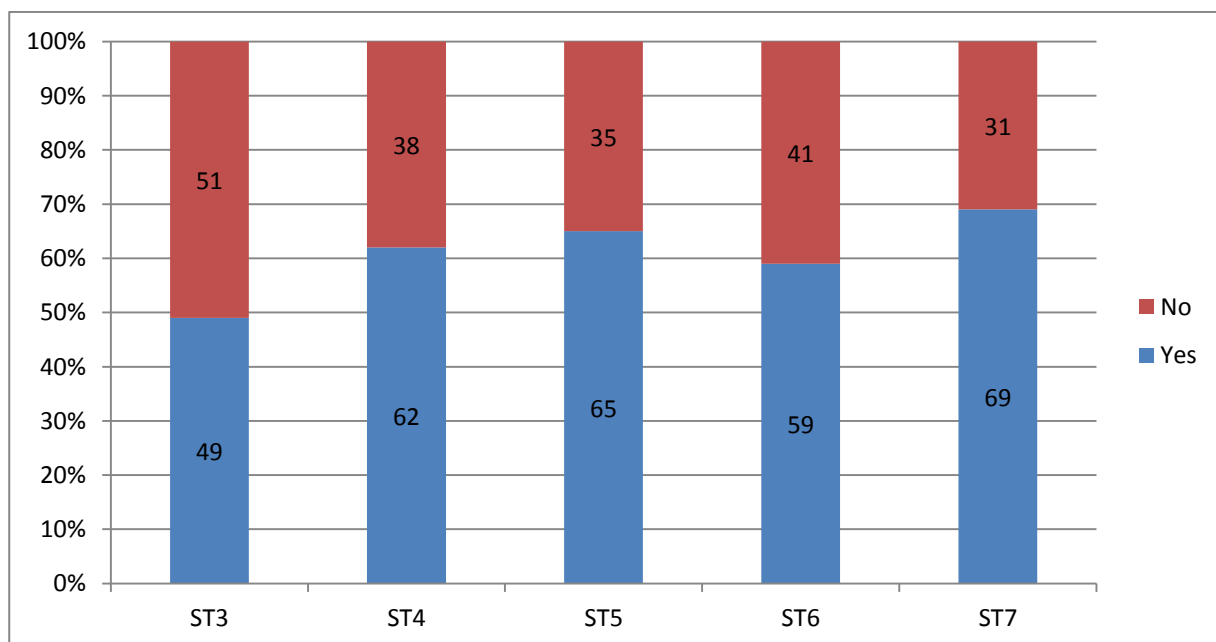
Q.7 In your ordinary working week are you able to find sufficient time for supporting professional activities such as audit or Quality Improvement?

(This question was presented to trainees of the following grades: ST3, ST4, ST5, ST6, ST7) 2017: n=649

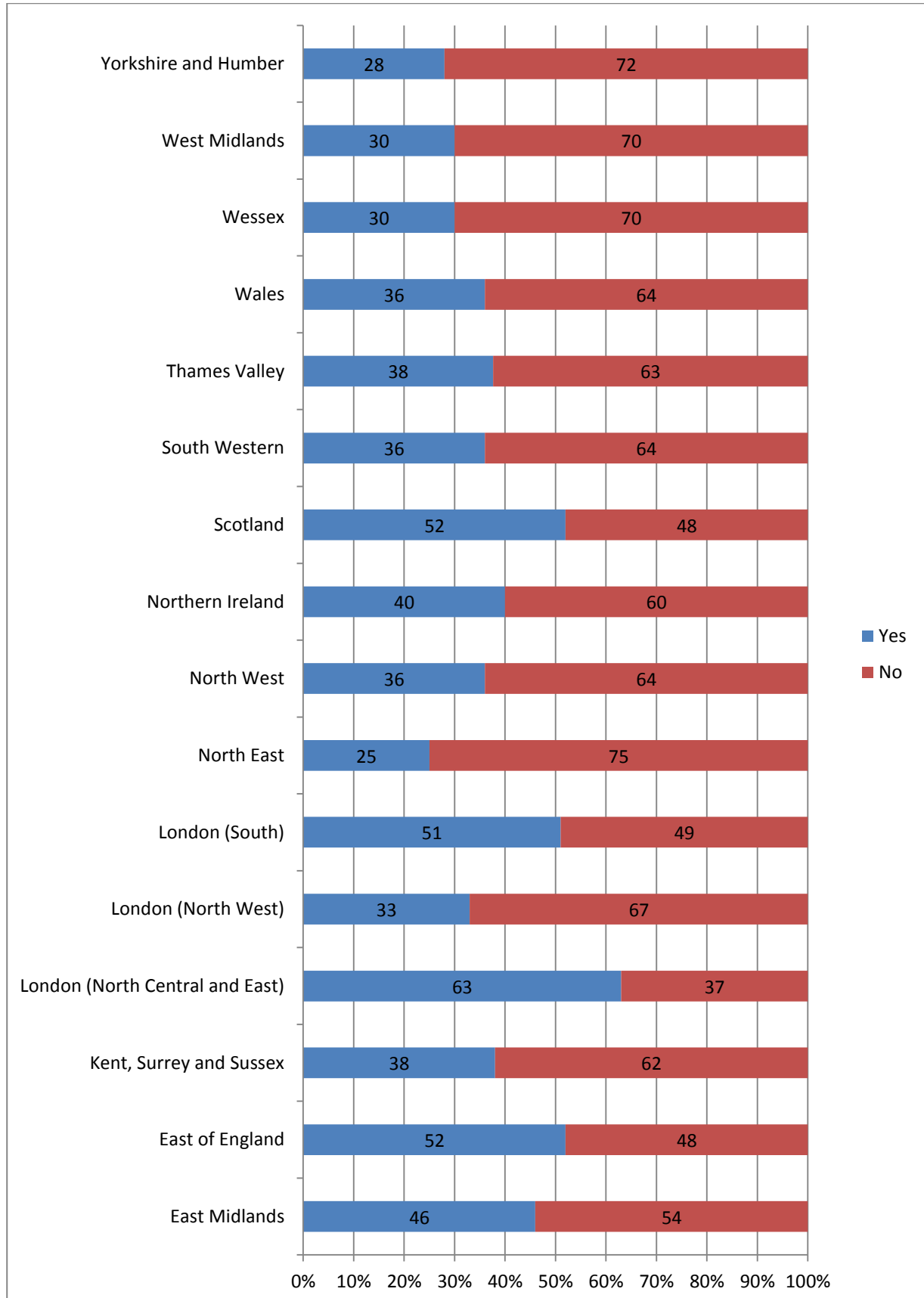
All results



Grade



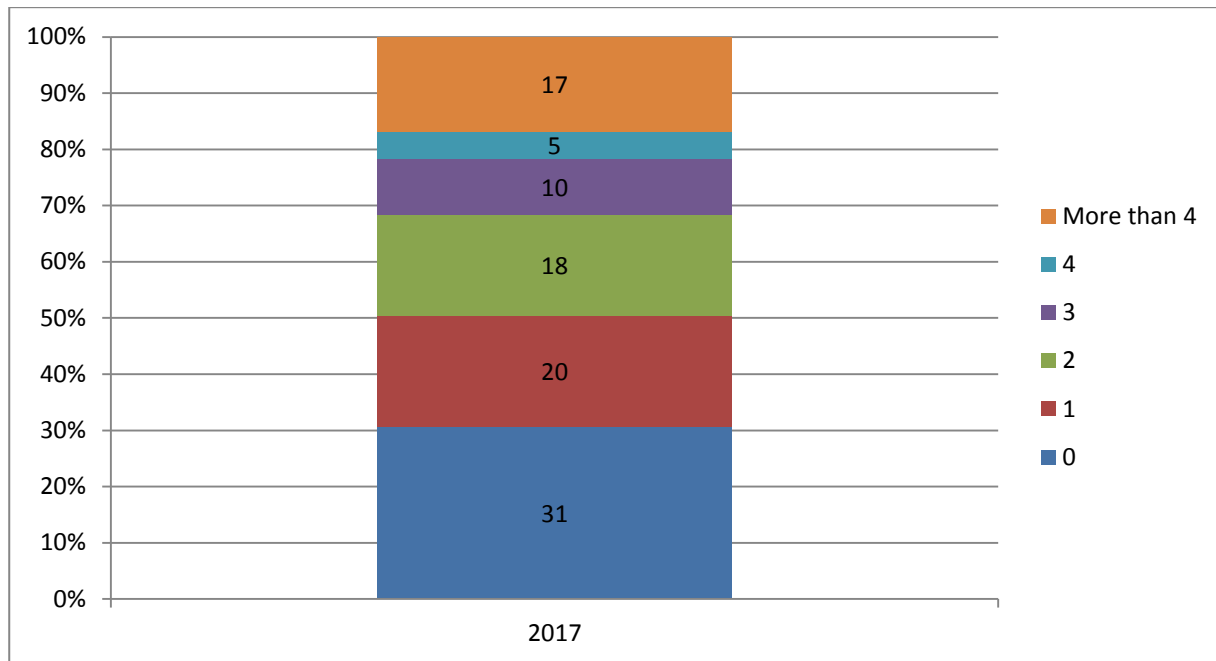
Deanery / LETB



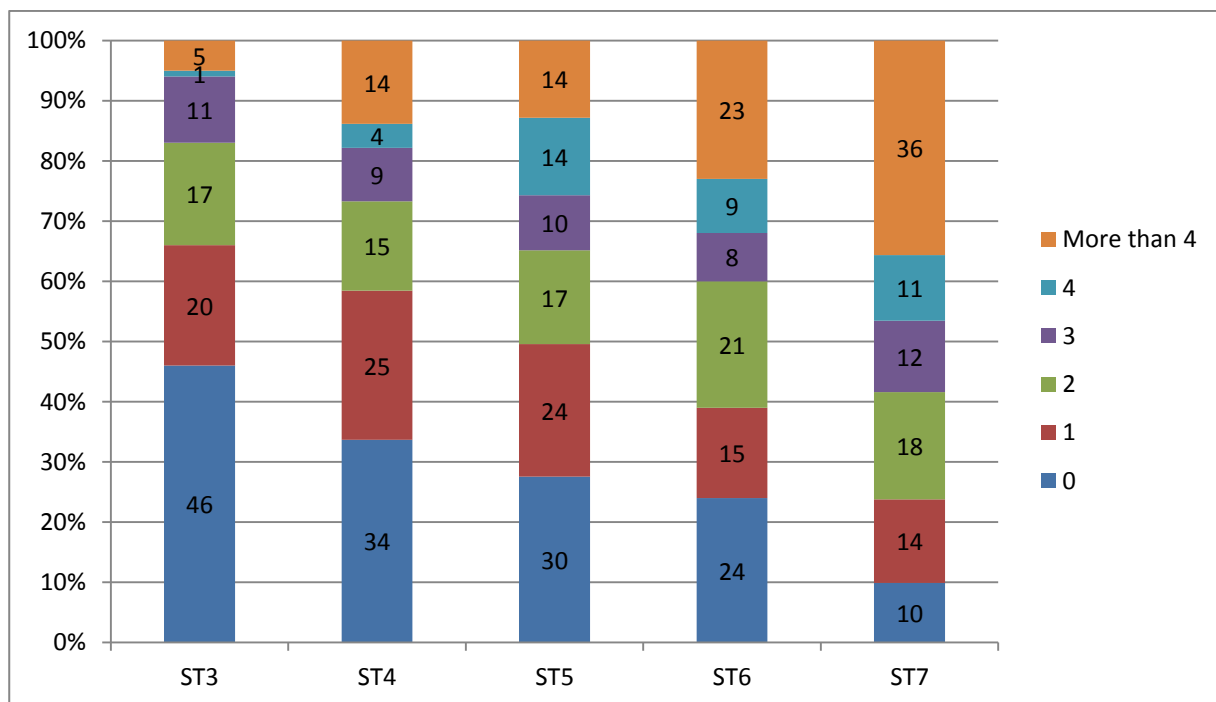
Q.8 Within the last year, how many non-clinical management or organisational meetings (e.g. about service development with commissioners, trust managers or boards etc) have you attended?

(This question was presented to trainees of the following grades: ST3, ST4, ST5, ST6, ST7) 2017: n=649

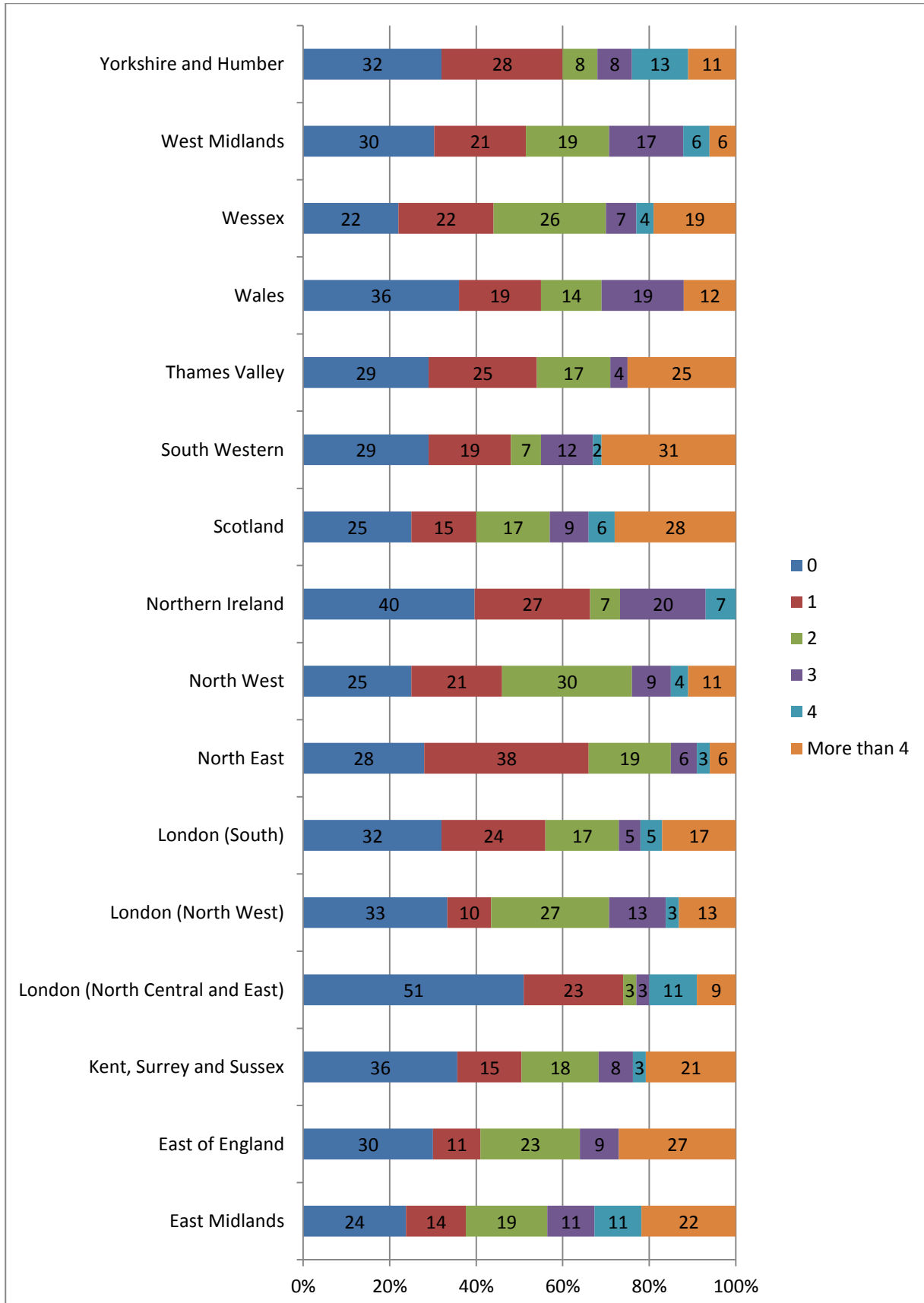
All results



Grade



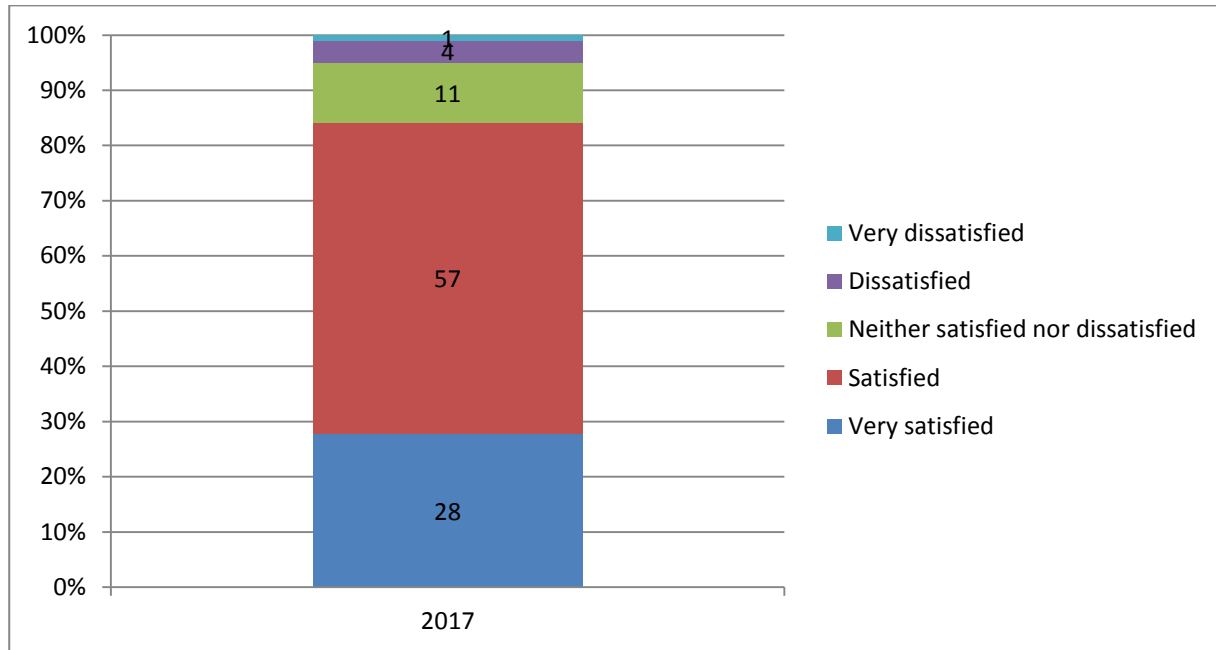
Deanery / LETB



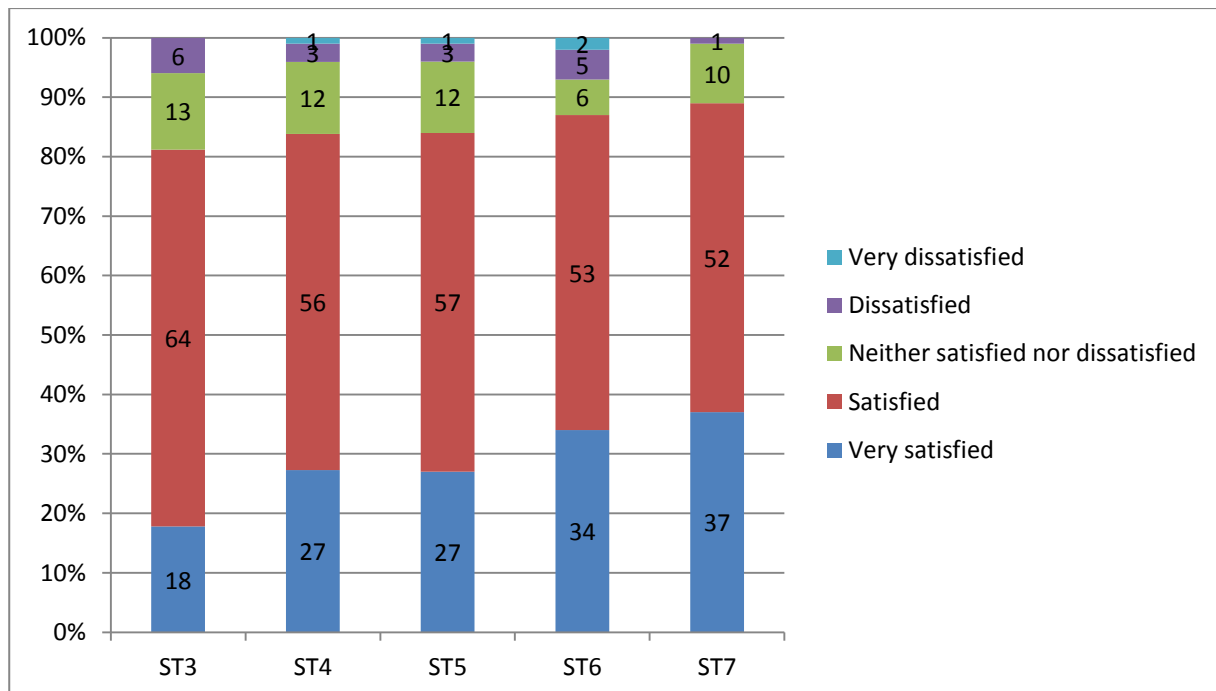
Q.9 Overall, how satisfied or dissatisfied are you with your training in Geriatric Medicine?

(This question was presented to trainees of the following grades: ST3, ST4, ST5, ST6, ST7) 2017: n=649

All results



Grade



Deanery / LETB

